

WPCP REHABILITATION PROJECT 3000 DAVIS STREET, SAN LEANDRO, CALIF SECTION 06400 PREMIUM CASEWORK

GENERAL CONTRACTOR

Braun Construction
8418 Nohed Lane
Elk Grove, CA. 95624
PHONE: 916.667.3535
FAX: 916.667.3534

INDEX

NOTES: N1
DETAILS: D1-D6
FLOOR PLAN: FL1
ELEVATIONS: A1.1-A6.1
SECTIONS VIEWS: S1-S2

ARCHITECT

Burks Toma Architects
814 Camelia Street
Berkeley, CA 94710
CONTACT:
PHONE: 510.524.4255
FAX: 510.528.3009

OWNER

CITY OF SAN LEANDRO, CALIF

- ORIGINAL
- SUBMITTAL DATE: 09/22/2011
- QUOTATION
- FIELD DIMENSION
- ENGINEERING
- AS BUILT
- INSTALLATION
- PRODUCTION
- CUSTOM/COUNTERTOP
- SHIPPING
- PRELIMINARY

JOB LOCATION

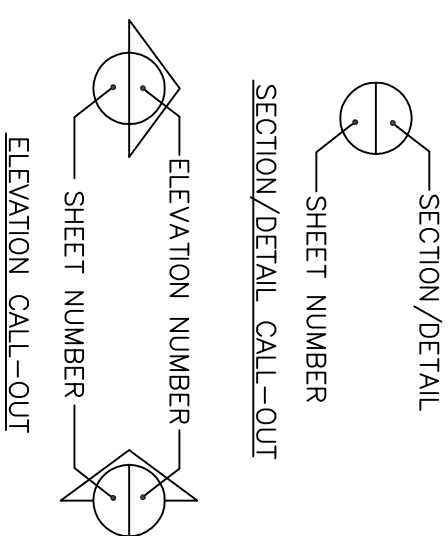


BUILDING CONDITIONS GUIDELINES

- A.) IN ORDER TO PROVIDE THE FINEST QUALITY CASEWORK AND FURNISHINGS AND TO ASSIST IN PROPER COORDINATION OF CASEWORK DELIVERY AND INSTALLATION ACTIVITY WITH THE OTHER TRADES ON THE PROJECT, THE FOLLOWING CRITERIA HAS BEEN ESTABLISHED AND DEFINES THE REQUIRED DEGREE OF BUILDING READINESS TO FACILITATE THE START OF INSTALLATION. IT IS IMPERATIVE THAT THESE GUIDELINES BE MET IN ORDER TO MINIMIZE, OR ELIMINATE THE POTENTIAL DAMAGE TO CASEWORK AND EQUIPMENT PRIOR TO ACCEPTANCE BY THE END USER. INSTALLATION FIRMS SHOULD UTILIZE THIS CRITERIA TO DETERMINE JOBSITE READINESS DURING THEIR PRE-INSTALLATION INSPECTIONS.
- B.) FROM THE EARLIEST STAGES, PROJECT SCHEDULES SHOULD TAKE INTO ACCOUNT THE FOLLOWING PARAMETERS:
1. THE BUILDING AREAS REQUIRING THE INSTALLATION OF CASEWORK & FURNISHINGS ARE TO BE DRIED-IN AND UNEXPOSED TO ANY ADVERSE WEATHER CONDITIONS WHICH MAY DAMAGE FINISHED MATERIALS.
 2. FOR PROPER CURING OF EPOXY SEALANTS AND ADHESIVES, INTERIOR BUILDING TEMPERATURES ARE NOT TO REGISTER BELOW 65° RELATIVE HUMIDITY.
 3. INTERIOR BUILDING TEMPERATURE IS NOT TO EXCEED 80° F. TO AVOID UNDU E DRYING OF MATERIALS, SUBSEQUENTLY CAUSING STRUCTURAL FATIGUE AND DAMAGE. ADDITIONALLY, FREQUENT OR EXCESSIVE CHANGES IN TEMPERATURE OR HUMIDITY LEVELS DURING THE COURSE OF THE INSTALLATION, OR ONCE CASEWORK AND EQUIPMENT IS INSTALLED, MUST BE AVOIDED TO PREVENT DAMAGE.
 4. TO AVOID UNDU E STRESS OR SPLITTING OF WOOD MATERIALS, MOISTURE LEVELS SHOULD NEVER EXCEED 60% RELATIVE HUMIDITY. STRUCTURAL FATIGUE AND DAMAGE, ADDITIONALLY, FREQUENT OR EXCESSIVE CHANGES IN TEMPERATURE OR HUMIDITY LEVELS DURING THE COURSE OF THE INSTALLATION, OR ONCE CASEWORK AND EQUIPMENT IS INSTALLED, MUST BE AVOIDED TO PREVENT DAMAGE.
 5. ALL OVERHEAD MECHANICAL, ELECTRICAL OR PLUMBING ROUGH-IN WORK IS TO BE COMPLETE PRIOR TO DELIVERY OF CASEWORK.
 6. ALL MECHANICAL, ELECTRICAL OR PLUMBING ROUGH-IN WORK REQUIRED ALONG WALLS OR SERVICE ISLANDS WHERE CASEWORK AND EQUIPMENT IS TO BE INSTALLED, IS TO BE COMPLETE PRIOR TO DELIVERY OF MATERIALS. FINAL CONNECTIONS ARE TO BE COORDINATED WITH CASEWORK SUPPLIER.
 7. WALLS/PARTITIONS (WHETHER FRAMED, DEMOUNTABLE, OR MASONRY) MUST BE IN PLACE. IT IS RECOMMENDED THAT ALL PAINTING BE COMPLETED PRIOR TO DELIVERY OF CASEWORK AND FURNISHINGS IN AN EFFORT TO AVOID DAMAGE TO EQUIPMENT. WALLS/ PARTITIONS MUST HAVE AT LEAST THE PRIMER COAT OF PAINT APPLIED. IF FINISH PAINTING IS TO TAKE PLACE AFTER INSTALLATION, THE PAINTING TRADE MUST ADEQUATELY PROTECT THE CASEWORK & EQUIPMENT BY COVERING AND MASKING ALL SURFACES PRIOR TO COMMENCING TO PAINT.
 8. WOOD OR METAL BLOCKING (WALLGROUNDS) MUST BE INSTALLED WITHIN PARTITIONS PRIOR TO DELIVERY OF CASEWORK AND FURNISHINGS TO ALLOW FOR IMMEDIATE INSTALLATION ON DELIVERY.
 9. OVERHEAD SOFFITS OR CEILING GRID (WITH OR WITHOUT ACOUSTICAL TILE) MUST BE IN PLACE PRIOR TO MATERIAL INSTALLATION.
 10. OVERHEAD LIGHTING MUST BE INSTALLED AND CONNECTED PRIOR TO MATERIAL INSTALLATIONS.
 11. FLOORING REQ. TO BE PLACED UNDER CASEWORK & FURNISHINGS MUST BE INSTALLED PRIOR TO MATERIAL DELIVERY.
 12. CONCRETE FLOORS MUST BE LEVEL WITHIN ACCEPTABLE TRADE TOLERANCES. SPECIFICALLY, THE FLOOR MUST BE WITHIN 1/8" OF LEVEL PER 10 FOOT OF RUN, NON-ACCUMULATIVE, WHEN TESTED WITH A STRAIGHT EDGE IN ANY ONE DIRECTION. FLOORS WHICH EXCEED THIS REQUIREMENT WILL CAUSE ADDITIONAL WORK DURING CASEWORK AND FURNISHINGS INSTALLATION. UNACCEPTABLE GAPS AT FLOOR AND TOLERANCES AT SCRIBES AND FILLERS, DUE TO THIS PROBLEM, WHICH ARE DETECTED DURING THE INSPECTION STAGES BY THE CUSTOMER, WILL NOT BE THE RESPONSIBILITY OF THE CASEWORK SUPPLIER.
 13. "WET" OPERATIONS TO BE PERFORMED BY OTHER TRADES MUST BE COMPLETED PRIOR TO MATERIALS DELIVERY, TO ALLOW FOR IMMEDIATE INSTALLATION UPON DELIVERY.
- C.) IN ORDER FOR DELIVERY OF CASEWORK AND FURNISHINGS TO TAKE PLACE, THE FOLLOWING GENERAL GUIDELINES MUST BE APPLICABLE PRIOR TO THE SHIPMENT IF MATERIALS:
1. LOCK-UP ROOMS AVAILABLE.
 2. LOADING DOCK ACCESSIBLE.
 3. ENTRY TO ELEVATOR OR HOIST MUST BE ACCESSIBLE.
 4. UNOBSTRUCTED USE OF HOISTING DURING DELIVERY AND EASY DISTRIBUTION OF MATERIALS MUST BE POSSIBLE.
 5. MARSHALLING AREA FOR MATERIALS TO BE AVAILABLE.
 6. AREAS OF INSTALLATION TO BE BROOM CLEAN.
 7. MINIMUM TRADE INTERFERENCE IN AREA OF INSTALLATION.

STANDARD ABBREVIATIONS

- A.F.F..... ABOVE FINISH FLOOR
 CAB..... CABINET
 CBF..... CORNER BASE FILLER
 CTF..... CORNER TALL FILLER
 CWF..... CORNER WALL FILLER
 E.B..... EDGE BAND
 F.C..... FINISHED CEILING (BY OTHERS)
 f..... FINISH EDGE
 F.E..... FINISHED END
 F.F..... FINISHED FLOOR (BY OTHERS)
 F.W..... FINISHED WALL (BY OTHERS)
 HC..... HANDICAPPED
 IBF..... INTERMEDIATE BASE FILLER
 ITF..... INTERMEDIATE TALL FILLER
 IWF..... INTERMEDIATE WALL FILLER
 K.S..... KNEE SPACE
 K.S.P..... KNEE SPACE PANEL
 LK..... LOCK
 MCP..... MELAMINE COMPONENT PANEL
 N.I.C..... NOT IN CONTRACT
 N.T.S..... NOT TO SCALE
 P.B..... PARTICLE BOARD
 RBP..... REMOVABLE BACK PANEL
 SBF..... SCRIBE BASE FILLER
 STF..... SCRIBE TALL FILLER
 SWF..... SCRIBE WALL FILLER
 U.N.O..... UNLESS NOTED OTHERWISE
 V.I.F..... VERIFY IN FIELD
 F..... FILLER



TITLE
 PROJECT
WPCP REHABILITATION
 3000 DAVIS STREET
 SAN LEANDRO, CALIF

REVISIONS

DATE
09/22/2011

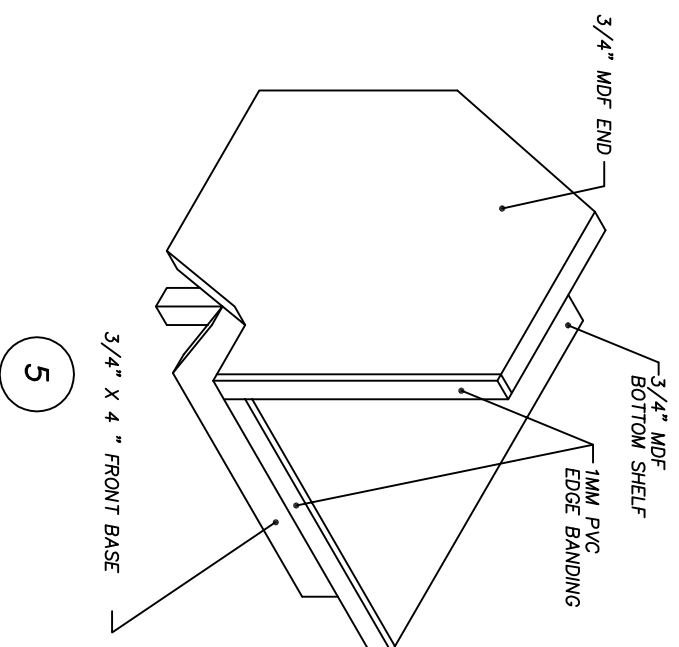
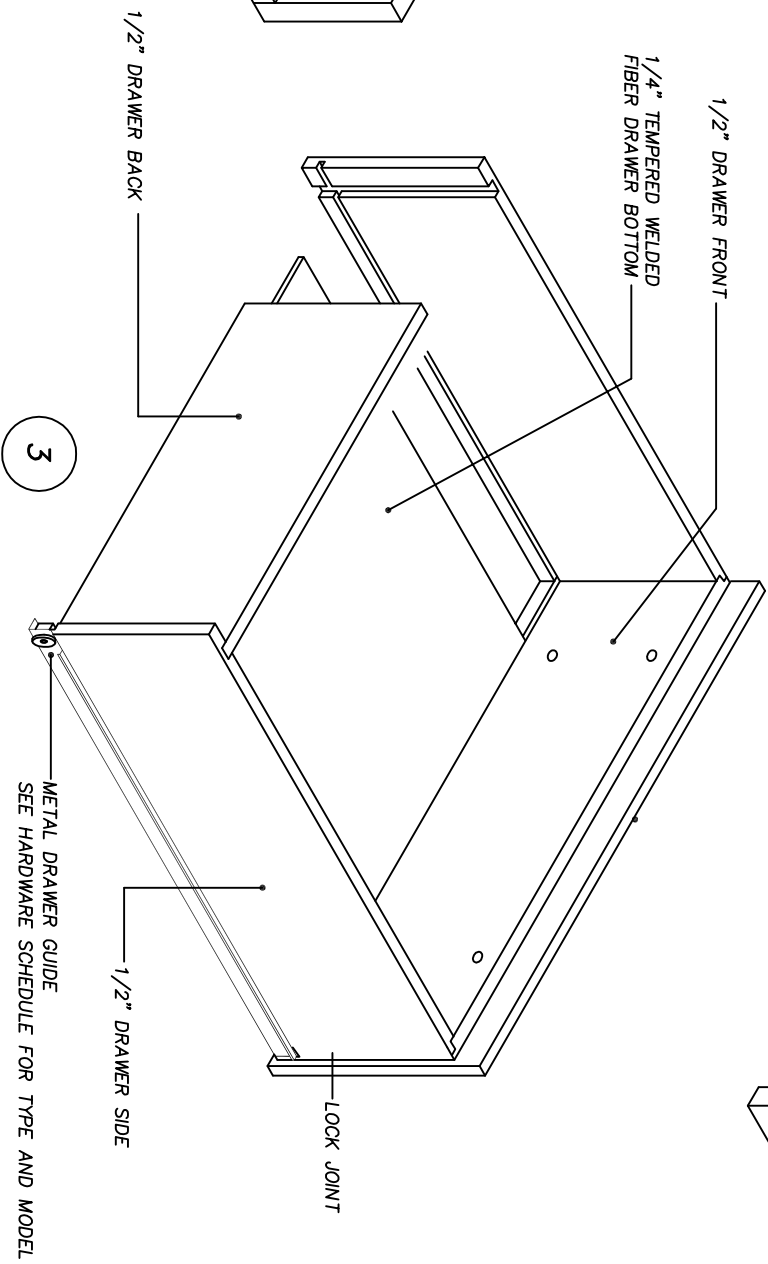
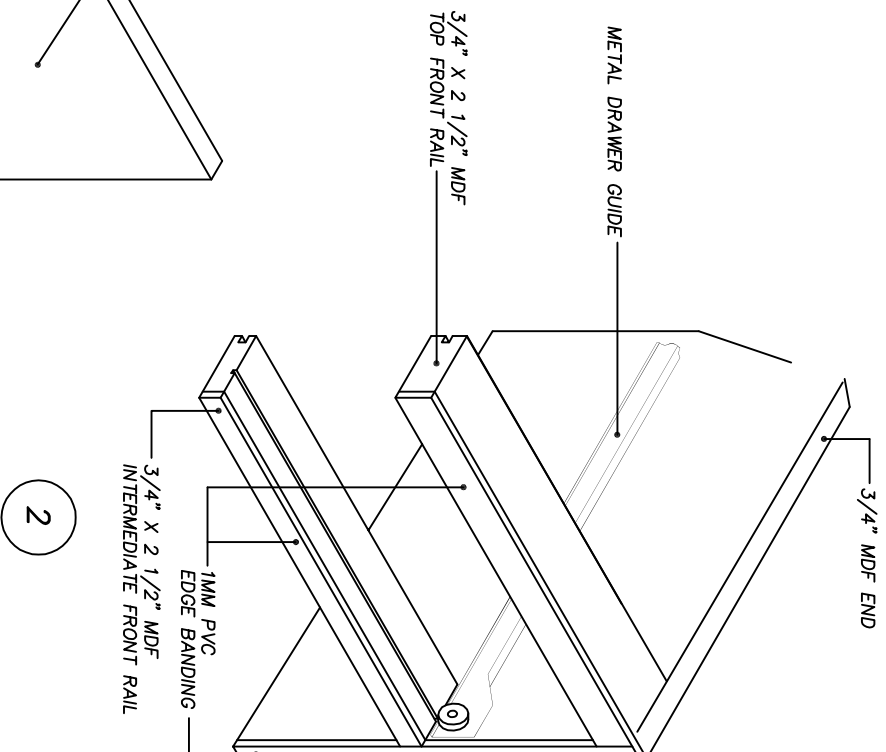
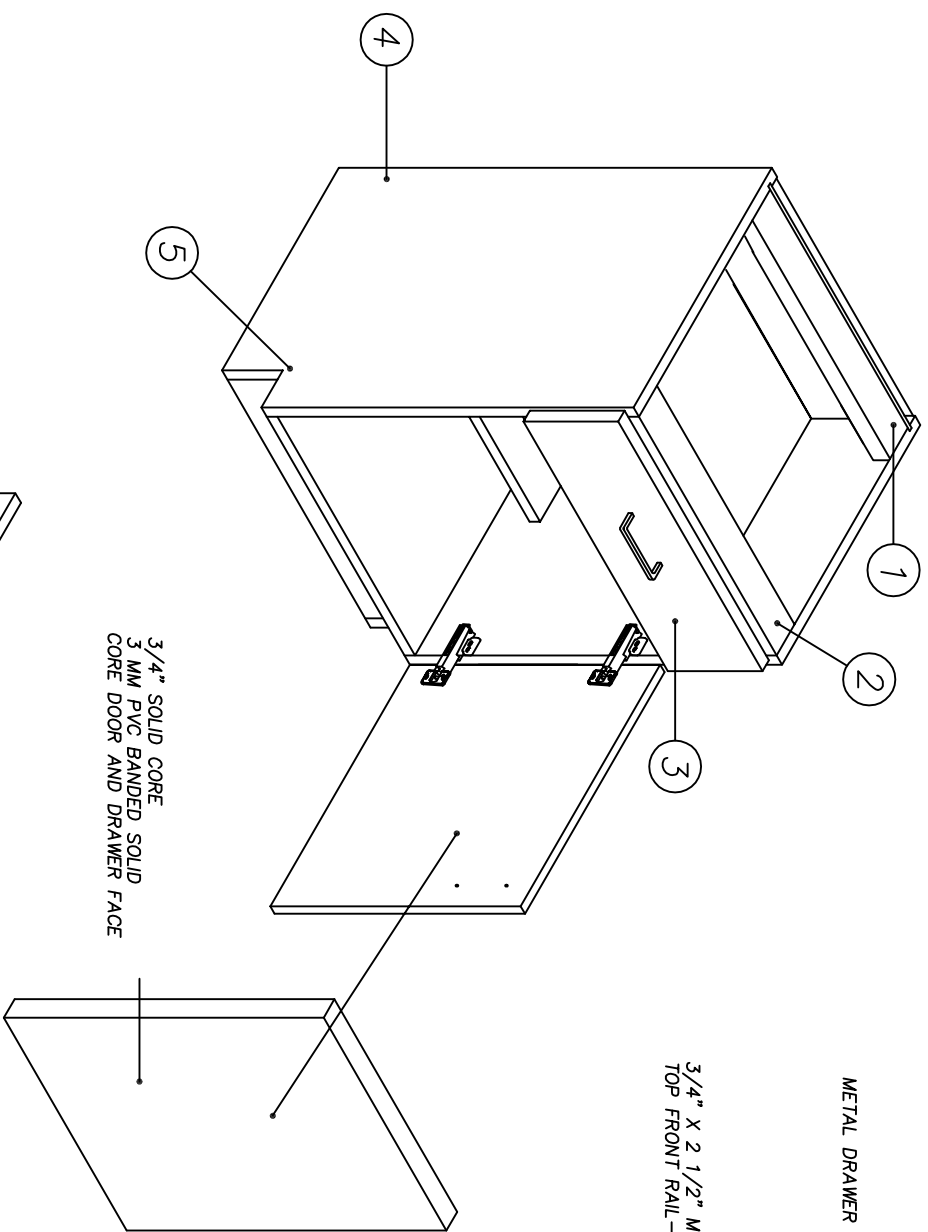
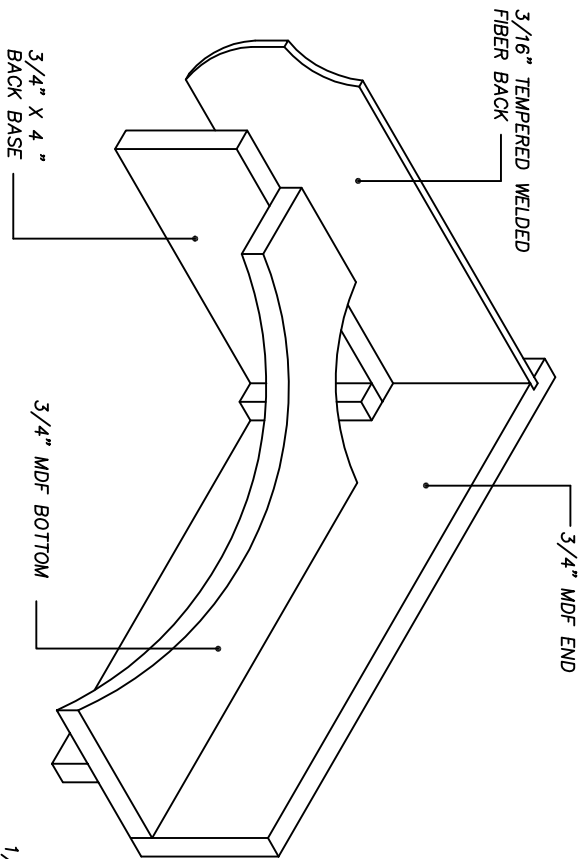
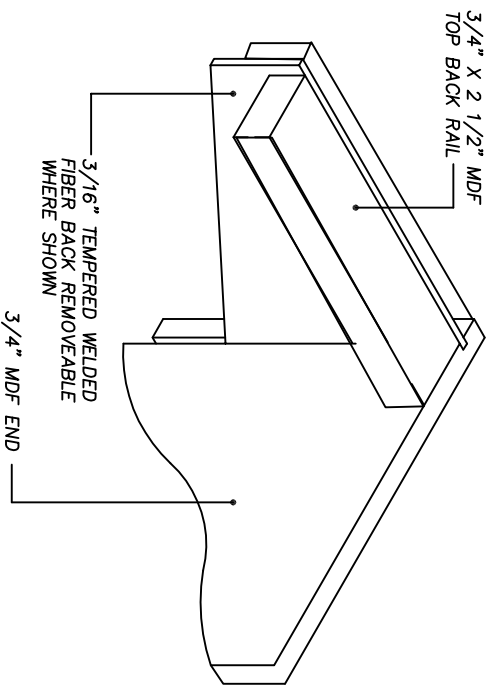
SCALE
AS-NOTED

DRAFTER
 SD

JOB NO. CHK'D BY
770

SHT
N1 OF **24**

CONSTRUCTION DETAILS FLUSH OVERLAY DESIGN



TITLE	CONSTRUCTION DETAILS
PROJECT	WPCP REHABILITATION 3000 DAVIS STREET SAN LEANDRO, CALIF

REVISIONS

DATE
09/22/2011

SCALE
AS-NOTED

DRAFTER
SD

JOB NO. 770
CHK'D BY

SHT D2 OF 24

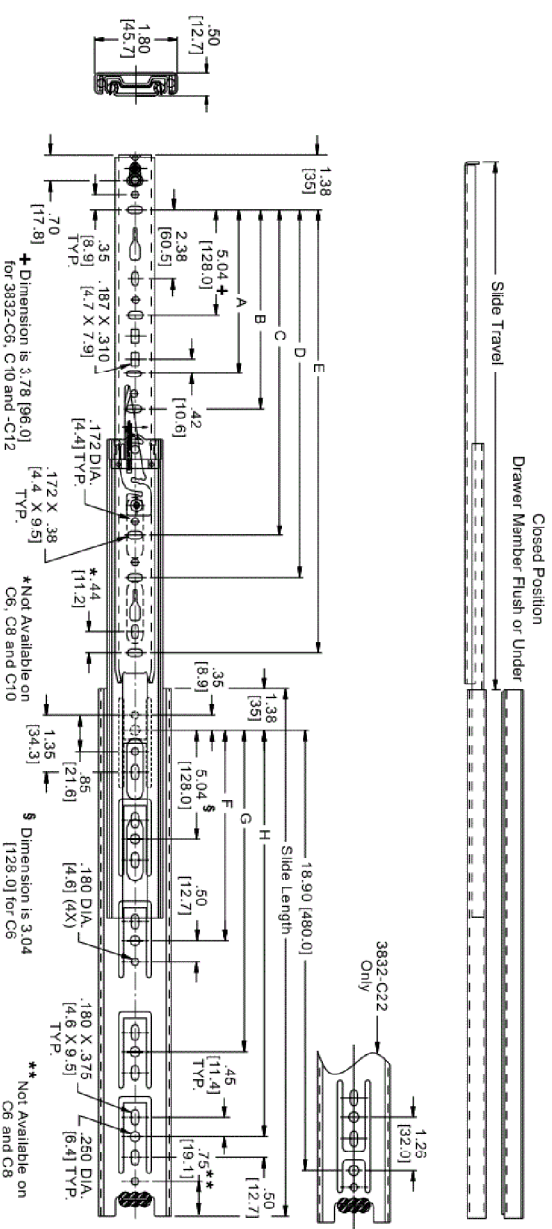
Accuride®

MODEL 3832C, 3834C

Cam
DRAWER
ADJUST

APPLICATIONS: For use in wood pedestals, dresser and desk drawers, casework, residential and kitchen cabinetry. **Not intended for lateral file drawer applications. Use for side mount only. This product is covered by U.S. (5,980,007), (488,712) and various foreign patents issued and/or pending.**

Vertical Drawer Adjustment Cam
32mm System Box Drawer Slide
Up To 100 lb. [45.5] Capacity



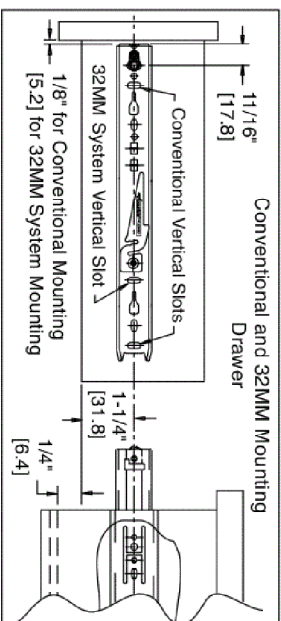
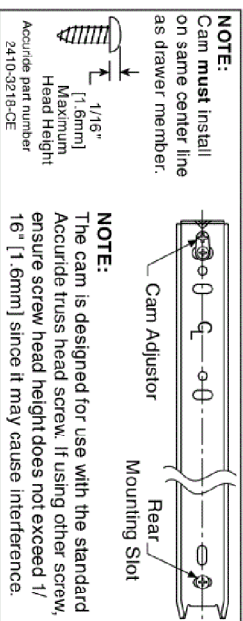
Installation Instructions

Install Cabinet Member

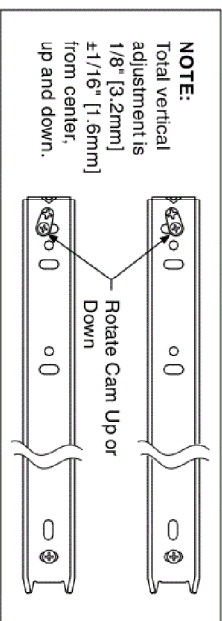
- Separate slide members by simultaneously lifting up the left hand disconnect lever and pushing down the right hand lever.
- Install cabinet (large) member first. For applications with an overlay drawer front, refer to Figure 1 for conventional mounting and Figure 2 for 32mm System mounting. For applications with an inset drawer front, set the slide back the thickness of the drawer front plus 1/8" [3.2mm].

Install Drawer Member

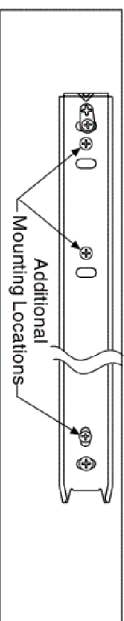
- Install the drawer member with a screw through the cam adjuster and through a hole or slot at the rear.



- Make sure the ball bearing retainers in the cabinet side are fully forward. Install drawer into cabinet. Close the drawer.
- Open the drawer and rotate the cam with a Phillips or Pozzi screwdriver to vertically position the drawer in relation to the cabinet.



- Install additional set screws to secure.



Slide Ordering Instructions

Complete your slide order for Accuride models 3832C or 3834C by specifying the following:

Total Required Slides 10 Pair **C 3832 -C18 D**
 Slide Finish _____
 Slide Model _____
 Slide Length _____
 Polybag Packaging _____

Figure 1 Conventional Mounting - Cabinet

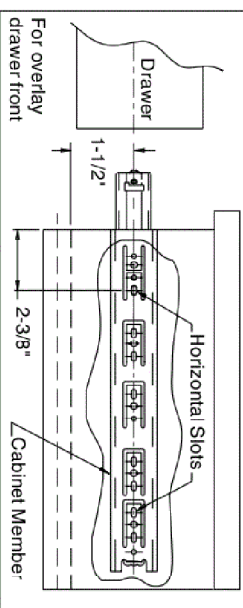
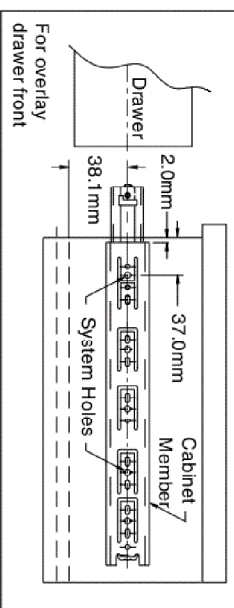


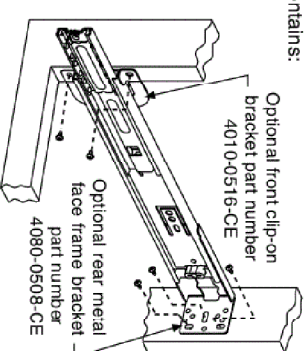
Figure 2 32MM System - Cabinet



Optional Face Frame Brackets

Face frame brackets are ordered as a kit or in bulk. Brackets are available in clear zinc finish only. Mounting screws are not included.

- To order kits, specify part number 4180-0322-XE. Each kit contains:
 2 front brackets, and
 2 rear brackets, and
 Installation Instructions.
 Order 1 kit per pair of slides.



Packaging Options

- Models 3832C, 3834C available in D-pack or bulk packaging.
 Model CH3832 available in D-pack only.
Distributor (D) Pack: All lengths are packaged 10 pair per box. Polybag includes one pair of slides with mounting screws.
Bulk (P) Pack: All lengths are packaged 10 pair per box. Slides and screws are ordered and packaged separately.

Specifications

Slide members and ball retainers: Cold rolled steel
 Ball bearings: Carburized steel / acetal polymer
NOTE: Specifications, materials, prices, terms, and delivery are subject to change without notice.

Accuride

ACCURIDE INTERNATIONAL INC.

12311 Shoemaker Avenue
 Santa Fe Springs, CA 90670
 TEL (562) 903-0200
 FAX (562) 903-0208
 www.accuride.com

Manufacturing, Engineering, and Sales
 United States • Germany • Japan • Mexico • United Kingdom
 Copyright © 2006 Accuride International Inc. Printed in U.S.A. 3700-9464(1107)-MK097-R5-0806

- Finish**
 3832C: Bright electro-zinc (C), black zinc (CB), white electrocoating (EW)*, H-coat (CH) 3832 only*
 3834C: Bright electro-zinc (C), black zinc (CB),
- Length**
 3832C: 6" - 28" [140mm - 700mm]
 3834C: 12" - 28" [300mm - 700mm]
- Travel**
 3832C: Full extension
 3834C: 1" Over travel
- Height**
 1.80" [45.7mm]
- Load**
 3832C: 100 lbs. [45.5kg.] †
 3834C: 90 lbs. [41.0 kg.] †
- Side Space**
 .50" +0.062 / -0.0
 [12.7mm +1.6 / -0.0]
- Disconnect**
 Front, handed lever
- Mounting**
 Side, optional face frame brackets
- Hardware**
 Flat head firm Euro System screw or #8 pan head screw, Stainless steel screws for (CH) finish only.
- Ball Bearings**
 C & CB finish: Steel
 EW finish: Acetal polymer in drawer member
 CH finish: Stainless steel
- Features**
 Drawer member cam act on vertical adjustment, hold-in detent, silenced open and closed; 32mm spacing on cabinet member holes
- Optional Weather-Resistant Finish (CH) 3832 only**
 Electro-zinc plating with H-coat overcoat provides 8 times more protection for installations subjected to indirect weather conditions. Also features stainless steel ball retainer and rivets.

Part Number	Slide Length	Slide Travel	A B C D E F G H															
			3832	3834														
3832-C6	5.84 [148]	5.50 [140]																
3832-C8	7.84 [199]	8.00 [203]																
3832-C10	9.84 [250]	9.57 [243]																
3832-C12	11.81 [300]	12.00 [300]																
3834-C12	13.79 [350]	14.00 [350]																
3832-C14	15.75 [500]	15.00 [381]																
3832-C16	15.75 [400]	16.00 [432]																
3834-C16	17.72 [450]	18.00 [483]																
3832-C18	19.69 [500]	20.00 [533]																
3834-C18	21.65 [550]	22.00 [584]																
3832-C20	25.59 [600]	26.00 [635]																
3834-C20	27.56 [650]	28.00 [686]																
3832-C22	29.52 [700]	30.00 [737]																
3834-C22	31.48 [750]	32.00 [781]																
3832-C24	33.44 [800]	34.00 [831]																
3834-C24	35.40 [850]	36.00 [881]																
3832-C26	37.36 [900]	38.00 [931]																
3834-C26	39.32 [950]	40.00 [981]																
3832-C28	41.28 [1000]	42.00 [1031]																
3834-C28	43.24 [1050]	44.00 [1081]																

† A lateral file drawer is wider than it is deep.

• Minimum order quantities may apply.

‡ Not available on 3834-22.
 † Load rating based on 18" slides mounted in a 16" wide drawer cycled 50,000 times.

TITLE HARDWARE CUT SHEET

PROJECT WPCP REHABILITATION
 3000 DAVIS STREET
 SAN LEANDRO, CALIF

DATE 09/22/2011

SCALE AS-NOTED

DRAWER SD

JOB NO. 770
 CHK'D BY

SHT D3 OF 24

CLIP top 120°+ hinges



Features

- 120° opening angle
- For larger overlays (21 mm maximum)
- Straight-arm hinges only
- Three-dimensional adjustment
- Available with INSERTA tool-free attachment
- All metal hinge, nickel-plated

Straight-arm	Self close
Press-in	73T5580

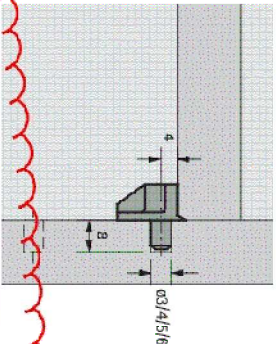
EXPANDO

- Steel, nickel-plated
- Attached with pre-mounted screws with EXPANDO dowels (618, 1500)
- Cam height adjustment ± 2 mm

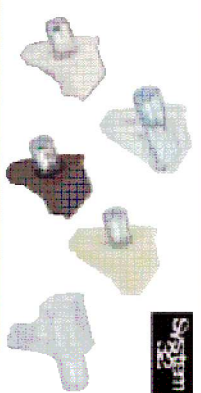
Part no.	
0 plate height (H)	174H7100E
3 plate height (H)	174H7130E

Shelf supports

Mounting example



Article
Shelf support Safety
 Steel pin,
 housed in moulded plastic



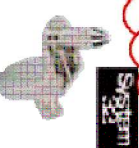
Pin diameter	Finish	Order no.	PU
5 mm	white	025 090	500
	brown	025 091	500
	beige	025 092	500
	translucent	016 180	500
	translucent	022 532	500
	translucent	022 533	500
4 mm	translucent	022 534	500
3 mm	translucent	022 535	500

Article
Shelf support Universal 1
 Pin diameter 5 mm
 1 additional pin
 for shelf
 die-cast zinc



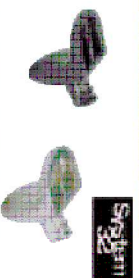
Finish	Order no.	PU
nickel-plated	019 557	500
bronze	048 581	500

Article
Shelf support Sekura 6
 Pin diameter 5 mm
 1 additional pin
 for shelf
 die-cast zinc



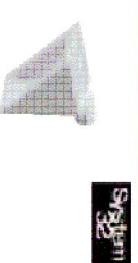
Finish	Order no.	PU
nickel-plated	079 707	500

Article
Shelf support Sekura 2
 Pin diameter 5 mm
 die-cast zinc



Finish	Order no.	PU
nickel-plated	025 100	500
bronze	048 582	500

Shelf supports
 can be screwed on to shelf and side wall
 for countersunk screw diameter 3 mm
 Pin diameter 5 mm
 plastic



Finish	Order no.	PU
white	044 749	500

TITLE	HARDWARE CUT SHEET
PROJECT	WPCP REHABILITATION 3000 DAVIS STREET SAN LEANDRO, CALIF

DATE	09/22/2011
SCALE	AS-NOTED
DRAFTER	SD
JOB NO.	770
CHK'D BY	
SHT	D4 OF 24

E.B. BRADLEY CO. - ONLINE CATALOGUE

Product Information

Decorative Surface Hardware » Pulls » Wire

Drawer Pulls Zinc
Manufacturer: BERENSON

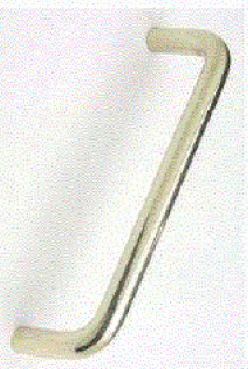
Berenson

Individually polybagged.

Includes: 1 - pull and mounting screws

SEO: Zinc Drawer Pulls

Web Disable (0/1): 0



SKU #	Finish	C/C
BB6130-01-26D	Dull chrome	4"
BB6131-01-26D	Dull chrome	96mm
BB6132-01-26D	Dull chrome	3-1/2"
BB6133-01-26D	Dull chrome	3"
BB6140-01-26	Polished chrome	4"
BB6141-01-26	Polished chrome	96mm
BB6142-01-26	Polished chrome	3-1/2"
BB6143-01-26	Polished chrome	3"
BB6150-01-3	Polished brass	4"
BB6151-01-3	Polished brass	96mm
BB6152-01-3	Polished brass	3-1/2"
BB6153-01-3	Polished brass	3"
BB6160-01-4	Dull brass	4"
BB6161-01-4	Dull brass	96mm

TITLE **HARDWARE CUT SHEET**
 PROJECT **WPCP REHABILITATION
 3000 DAVIS STREET
 SAN LEANDRO, CALIF**

REVISIONS

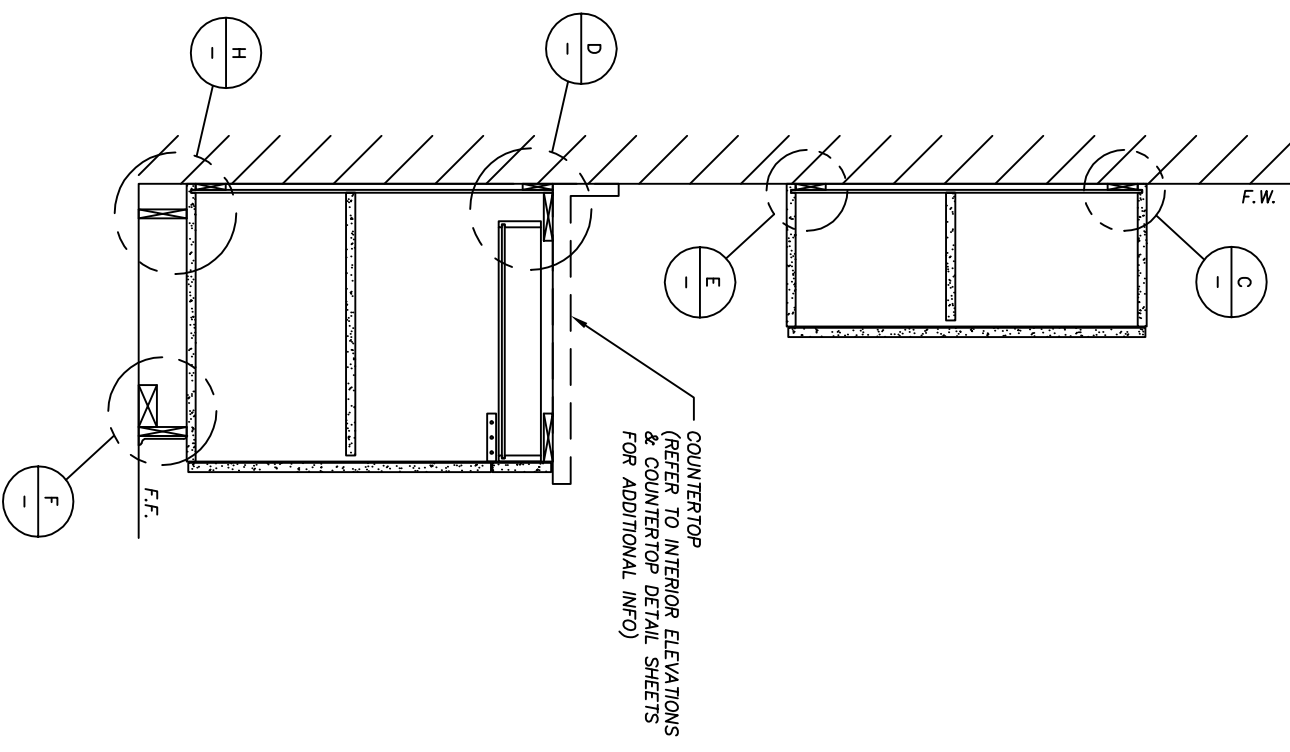
DATE **09/22/2011**

SCALE **AS-NOTED**

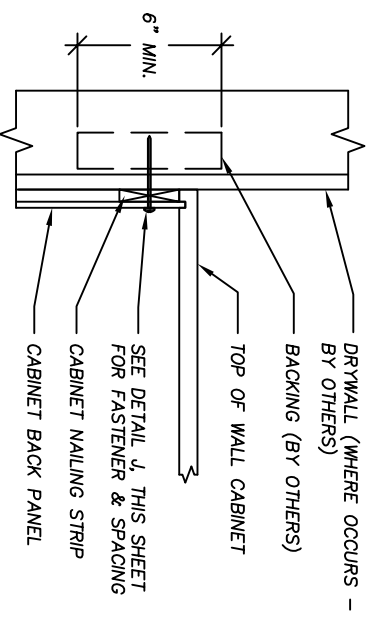
DRAFTER **SD**

JOB NO. **770** | CHK'D BY

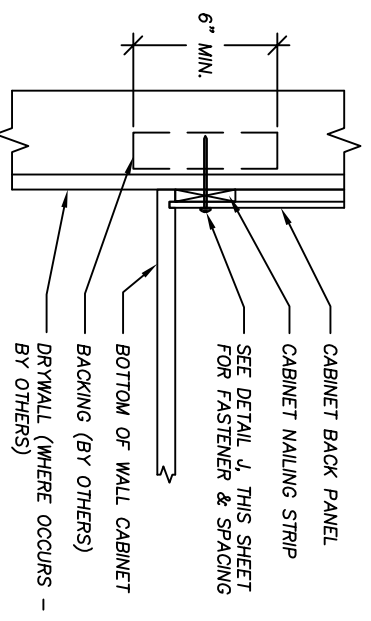
SHT **D5** OF **24**



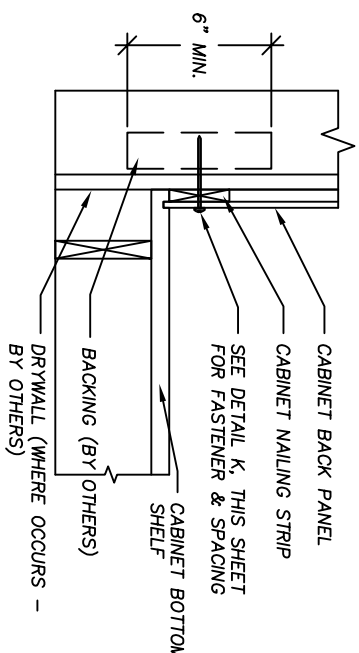
A BASE/WALL CAB. SECTION (TYP.)
SCALE: 3/4"=1'-0"



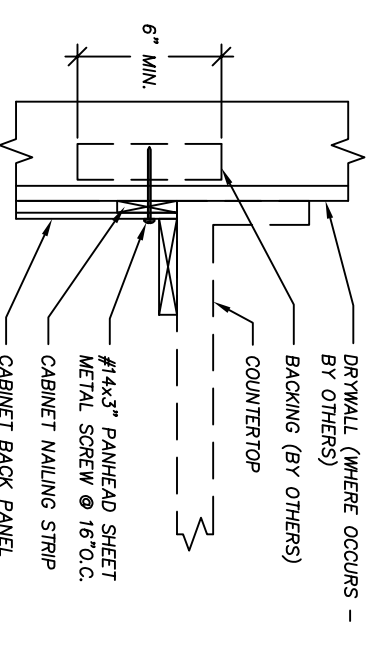
C BACKING AT WALL CAB. (TOP)
SCALE: 1 1/2"=1'-0"



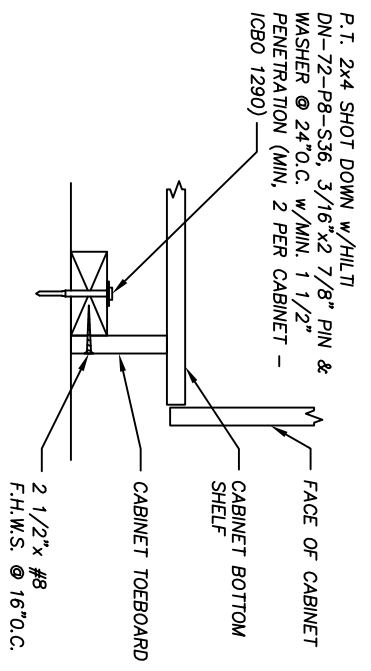
E BACKING AT WALL CAB. (BOT.)
SCALE: 1 1/2"=1'-0"



H BACKING AT BASE CAB. (BOT.)
SCALE: 1 1/2"=1'-0"



D BACKING AT BASE CAB. (TOP)
SCALE: 1 1/2"=1'-0"



F BLOCKING AT TOEKICK
SCALE: 1 1/2"=1'-0"

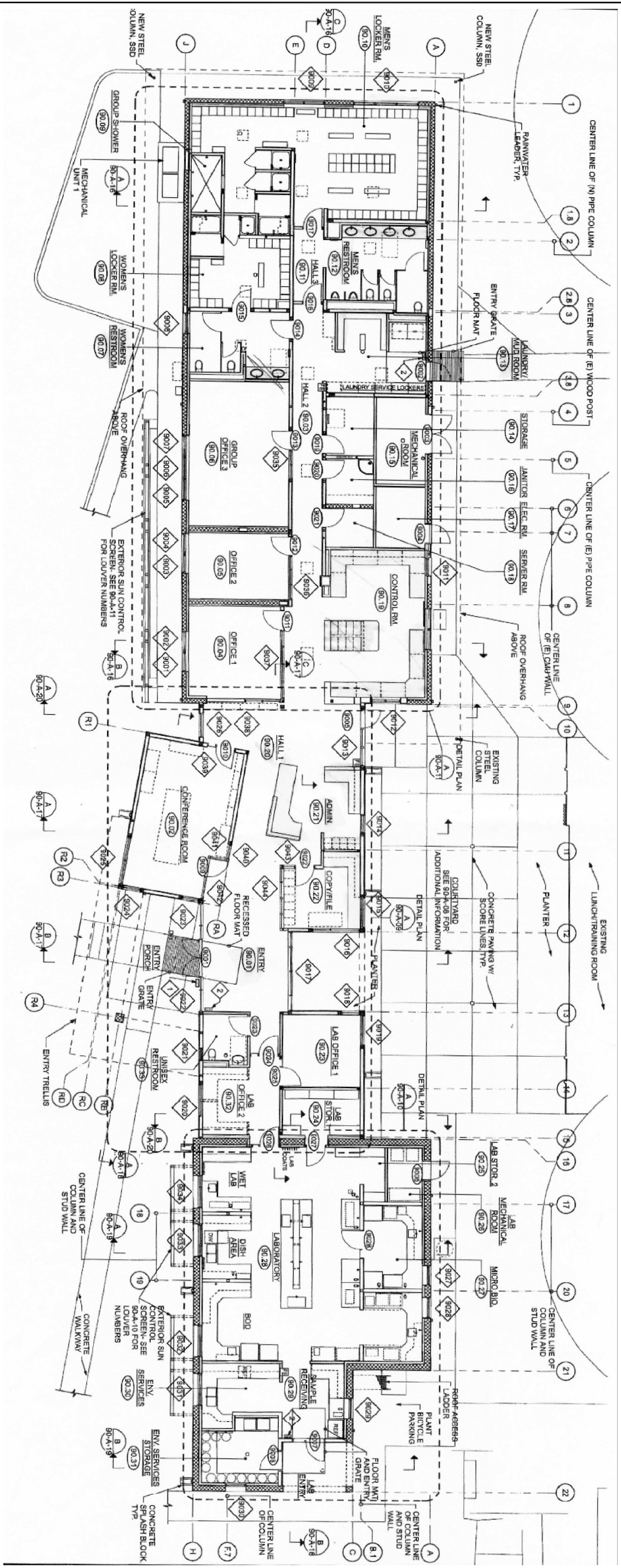
- NOTES:**
1. CABINETS TO BE FASTENED TO WALLS AT A MAXIMUM OF 3" FROM ENDS OF CABINETS, SPACED @ 8"O.C. MAXIMUM.
 2. BACKING TO BE 16GA. METAL OR 3x WOOD MINIMUM (BACKING BY OTHERS).
 3. FOR METAL BACKING, FASTENERS TO BE 1/4"Ø H.H.S.M.S.
 4. FOR WOOD BACKING, FASTENERS TO BE 14GA. WOOD SCREWS W/2" PENETRATION.

J WALL CAB. ANCHORAGE NOTES (TYP.)
SCALE: N/A

TITLE	HARDWARE CUT SHEET
PROJECT	WPCP REHABILITATION 3000 DAVIS STREET SAN LEANDRO, CALIF

REVISIONS

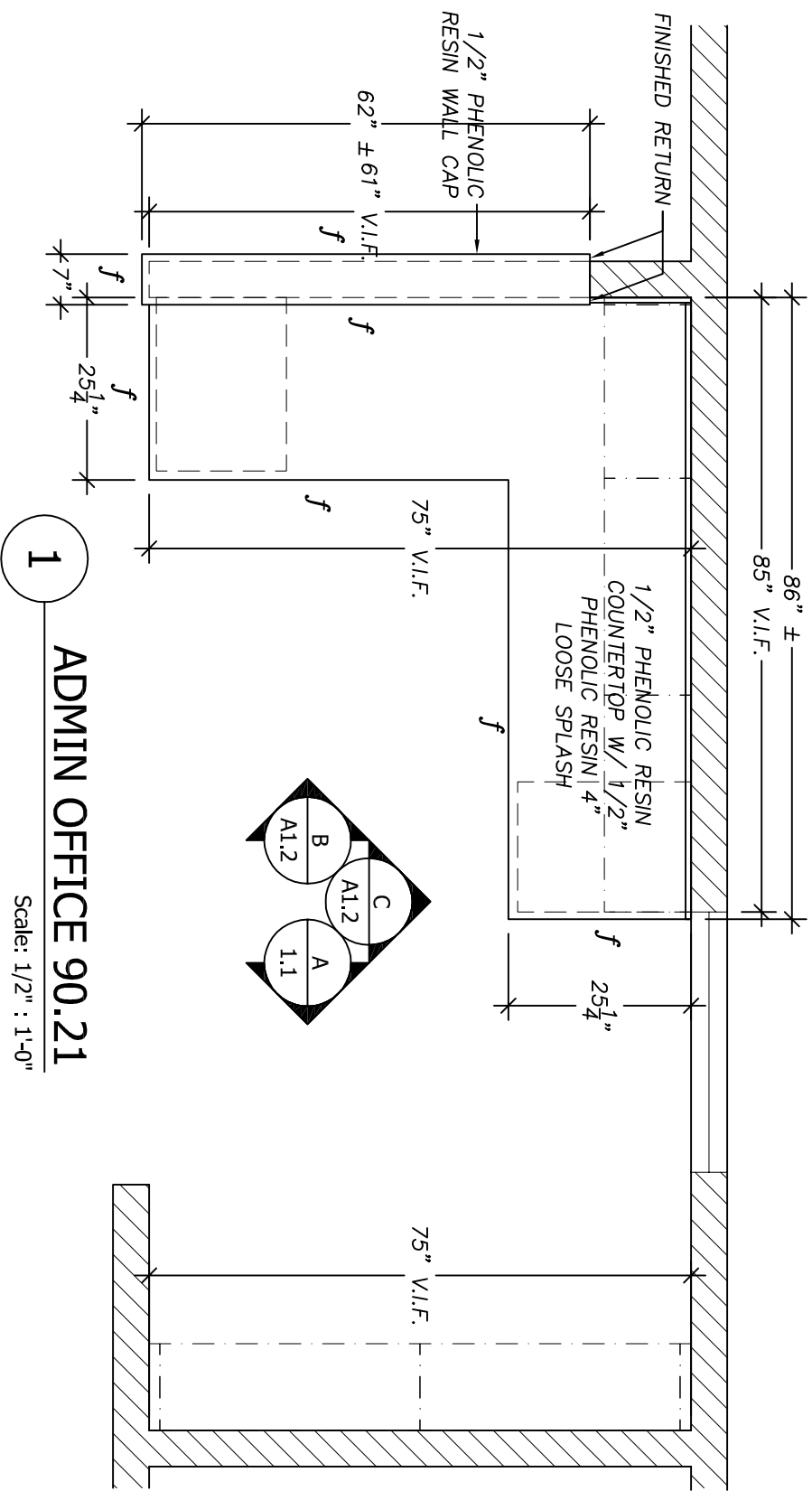
DATE	09/22/2011
SCALE	AS-NOTED
DRAFTER	SD
JOB NO.	770
CHK'D BY	
SHT	D6 OF 24



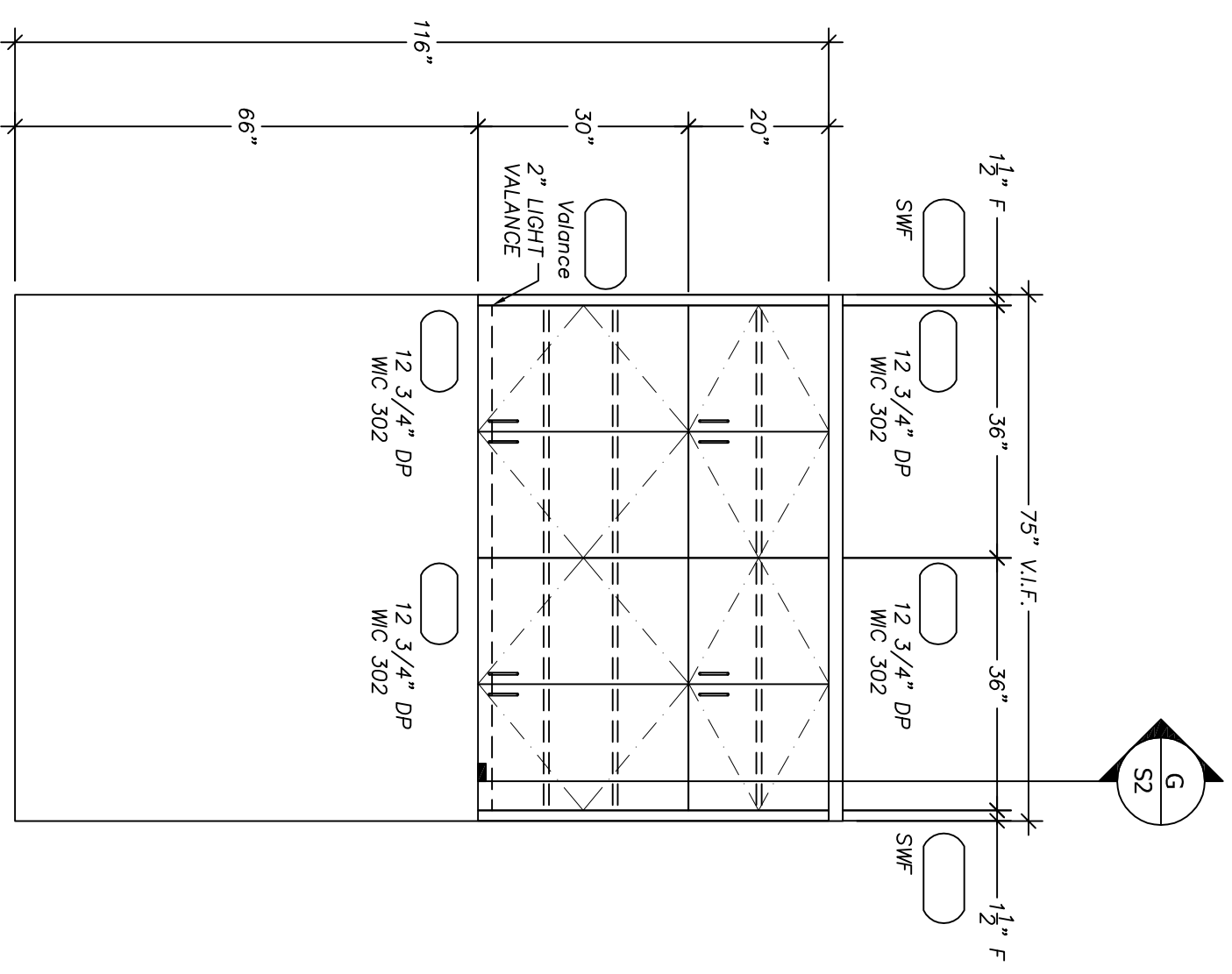
ARCHITECTURAL FLOOR FOR REFERENCE ONLY NOT BE USED FOR MANUFACTURING (NOT TO SCALE)

TITLE	Floor Plan
PROJECT	WPCP REHABILITATION 3000 DAVIS STREET SAN LEANDRO, CALIF

DATE	09/22/2011
SCALE	AS-NOTED
DRAFTER	SD
JOB NO.	770
CHK'D BY	
SHT	FP1 OF 24



1 ADMIN OFFICE 90.21
Scale: 1/2" : 1'-0"

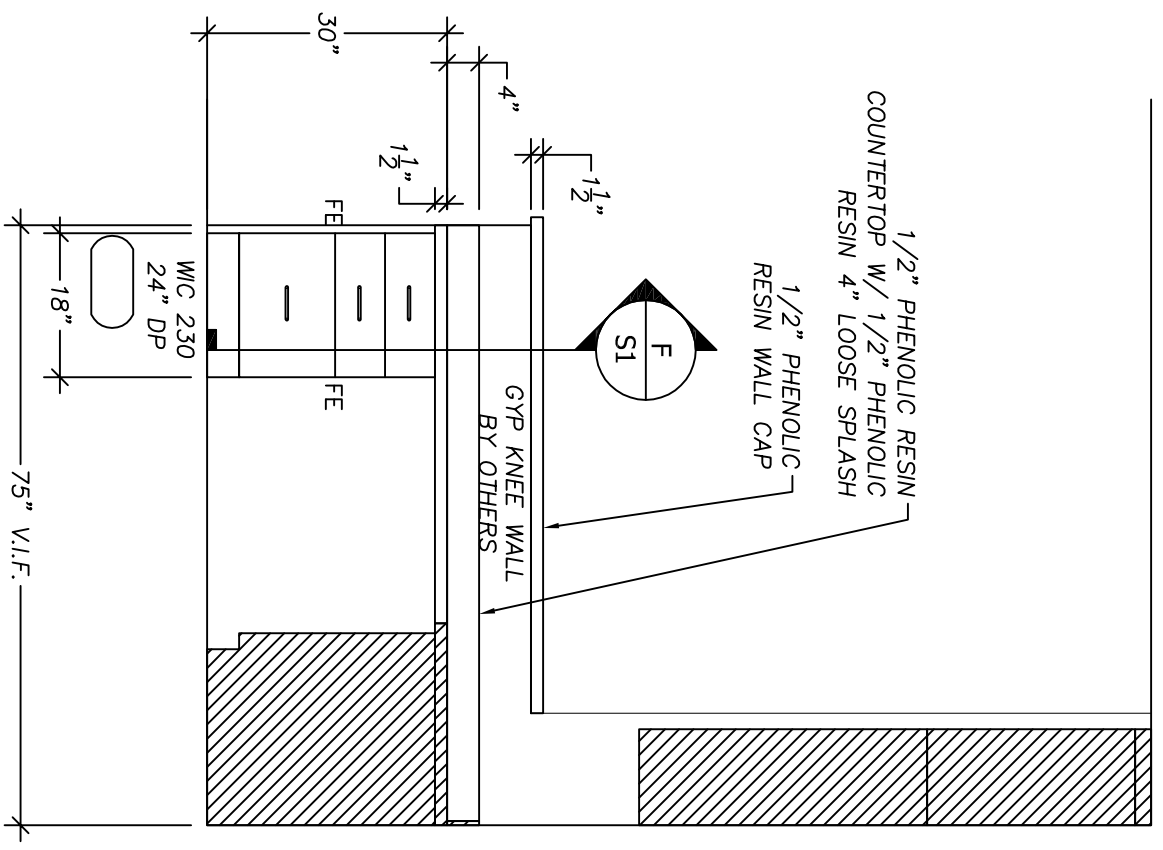


A ADMIN OFFICE 90.21
Scale: 1/2" : 1'-0"

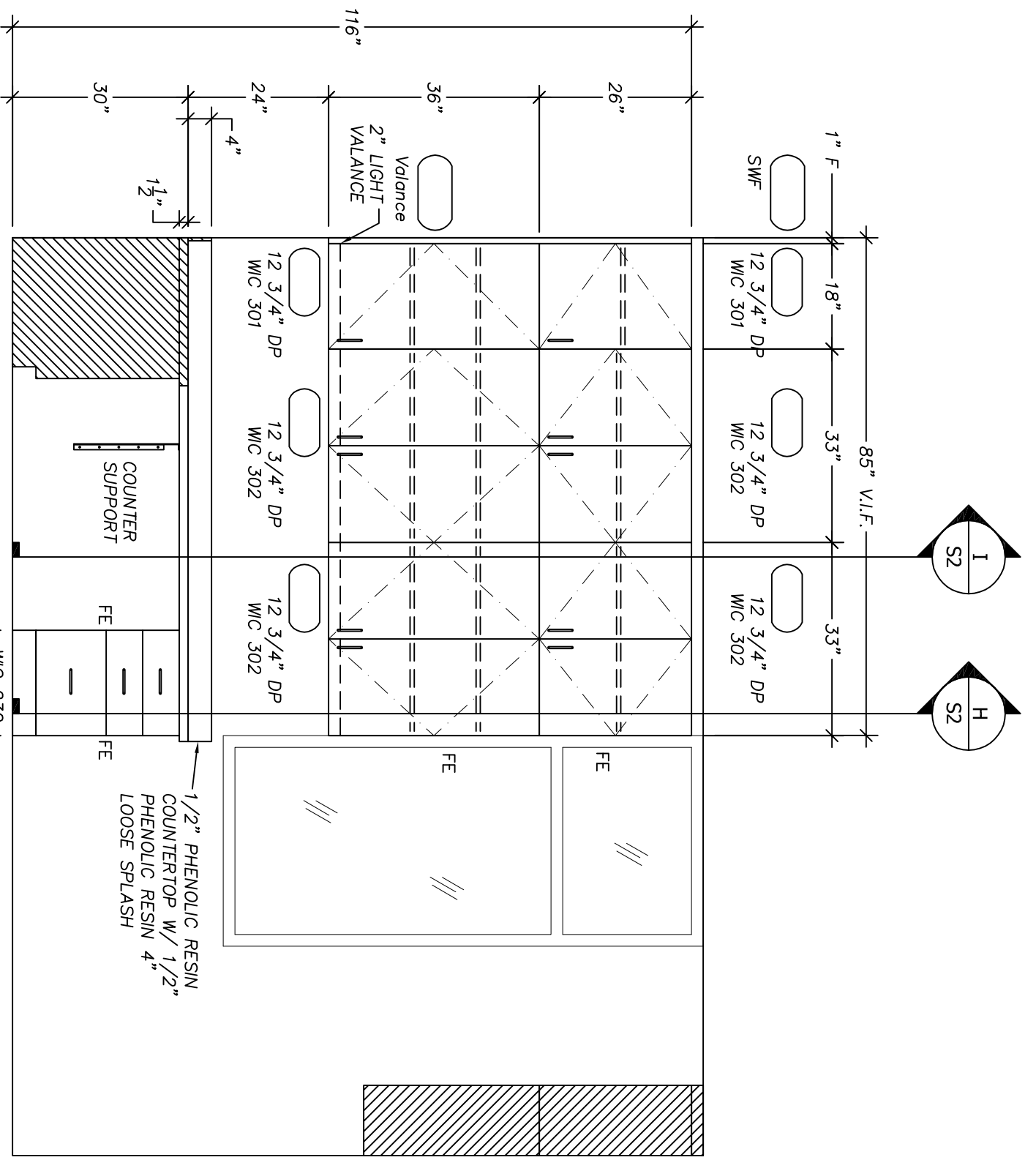
TITLE	ENLARGED PLAN & ELEVATIONS
PROJECT	WPCP REHABILITATION 3000 DAVIS STREET SAN LEANDRO, CALIF

REVISIONS	
-----------	--

DATE	09/22/2011
SCALE	AS-NOTED
DRAFTER	SD
JOB NO.	770
CHK'D BY	
SHT	A1.1 OF 24



B ADMIN OFFICE 90.21
Scale: 1/2" : 1'-0"



C ADMIN OFFICE 90.21
Scale: 1/2" : 1'-0"

TITLE ENLARGED PLAN & ELEVATIONS
PROJECT WPCP REHABILITATION
3000 DAVIS STREET
SAN LEANDRO, CALIF

REVISIONS

DATE

09/22/2011

SCALE

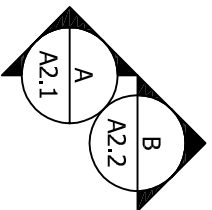
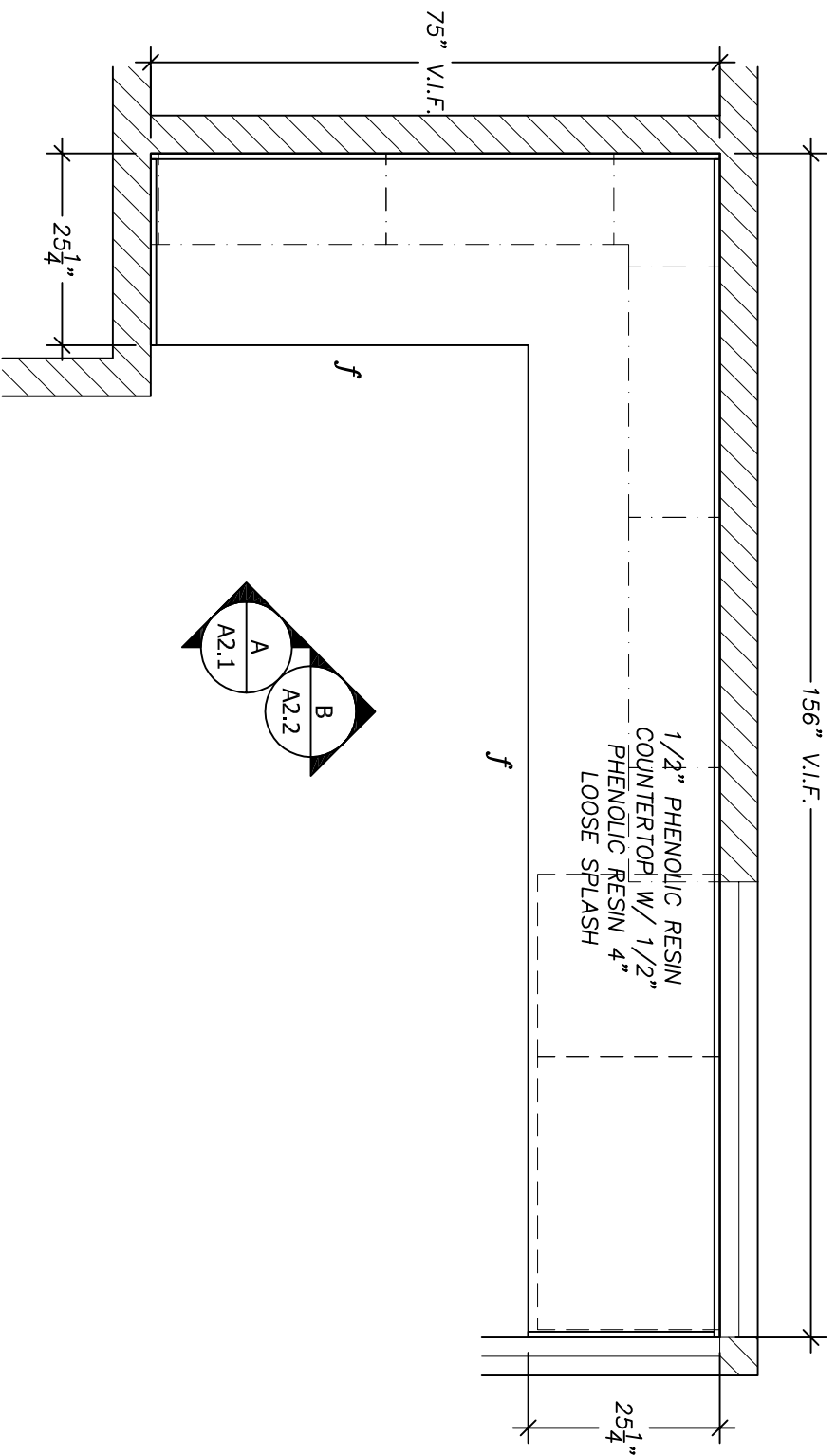
AS-NOTED

DRAFTER SD

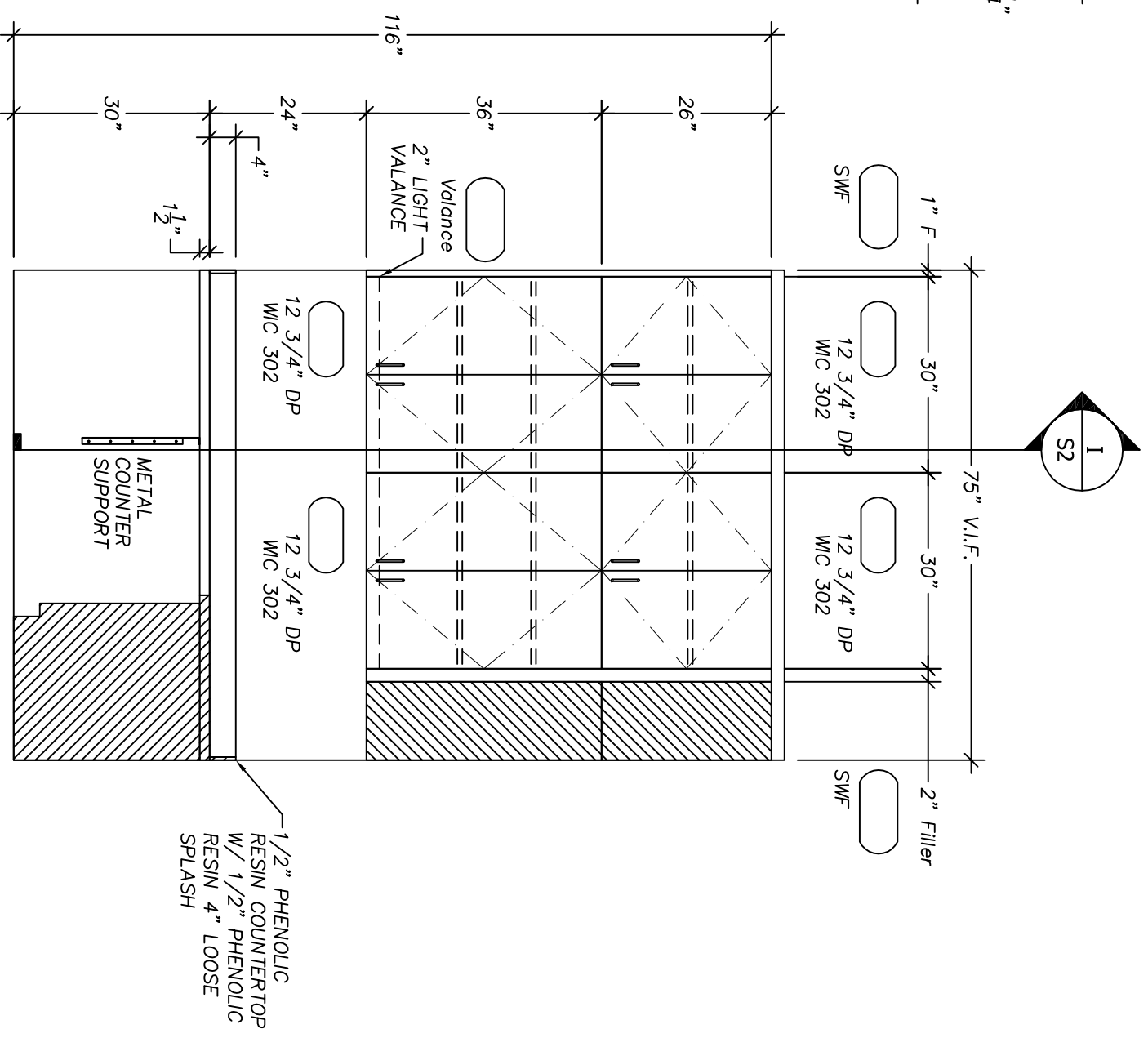
JOB NO. 770

CHK'D BY

SHT A1.2 OF 24



2 COPY/FILE 90.22
Scale: 1/2" : 1'-0"

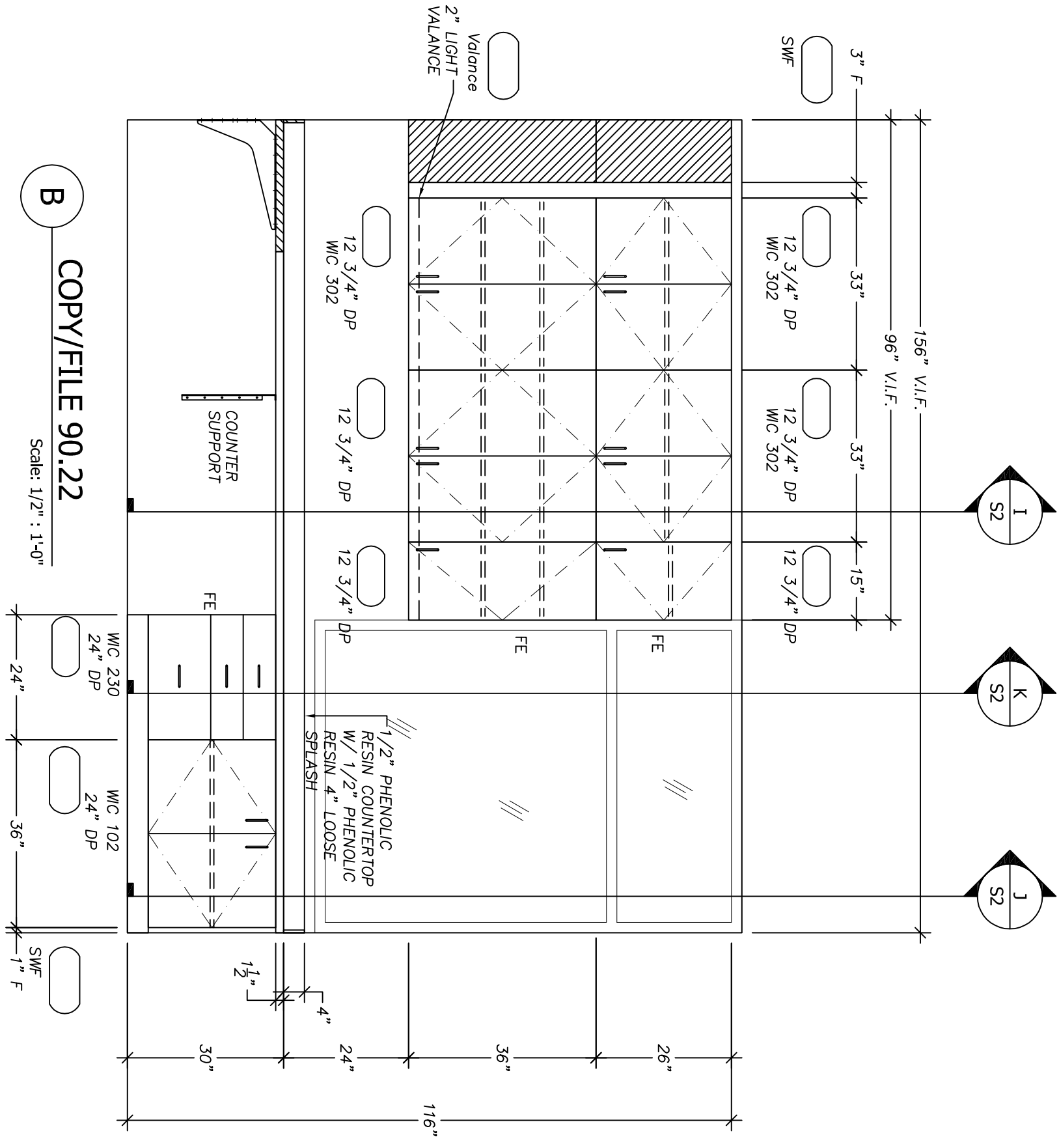


A COPY/FILE 90.22
Scale: 1/2" : 1'-0"

TITLE	ENLARGED PLAN & ELEVATIONS
PROJECT	WPCP REHABILITATION 3000 DAVIS STREET SAN LEANDRO, CALIF

REVISIONS	
-----------	--

DATE	09/22/2011
SCALE	AS-NOTED
DRAFTER	SD
JOB NO.	770
CHK'D BY	
SHT	A2.1 OF 24

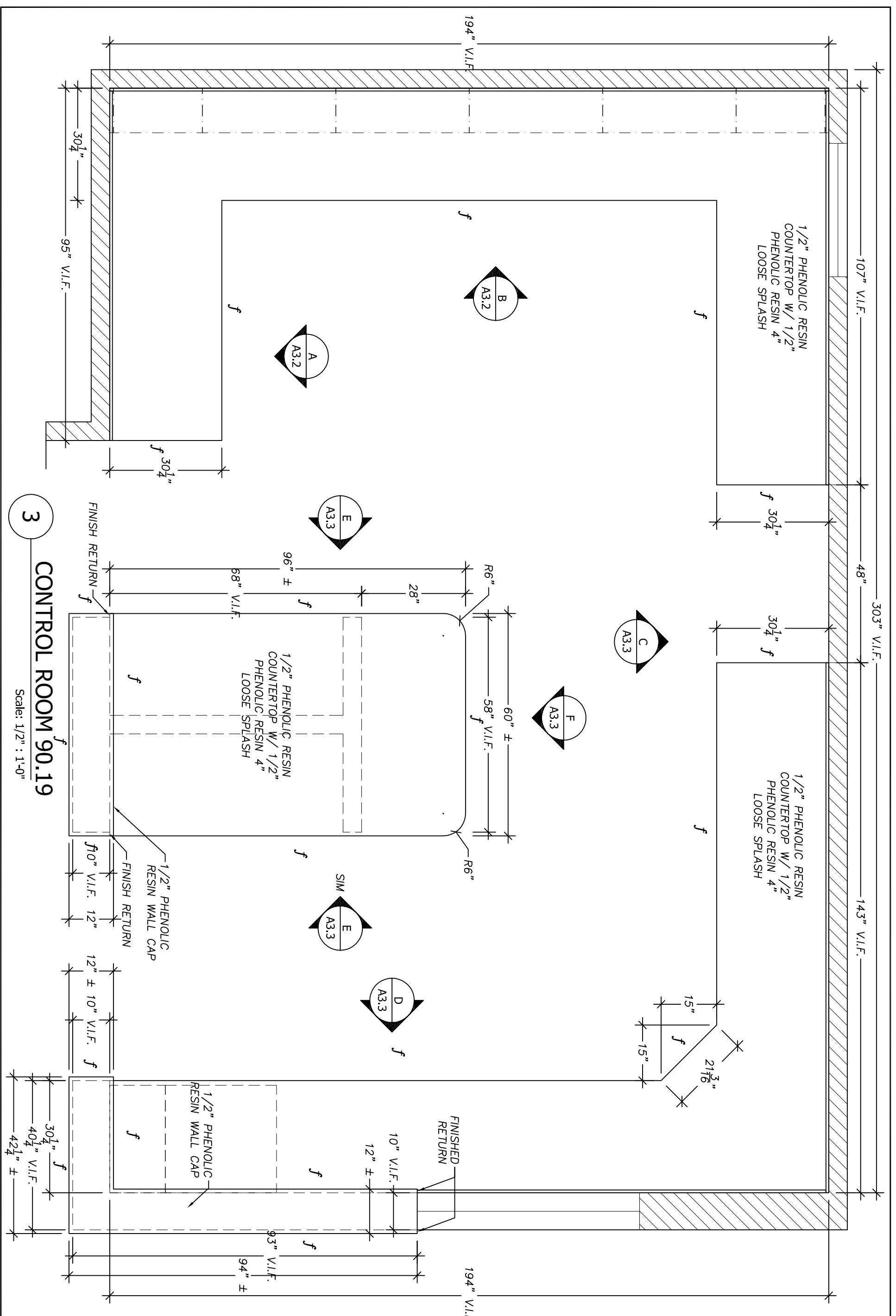


B COPY/FILE 90.22
Scale: 1/2" = 1'-0"

TITLE	ENLARGED PLAN & ELEVATIONS
PROJECT	WPCP REHABILITATION 3000 DAVIS STREET SAN LEANDRO, CALIF

DATE	09/22/2011
SCALE	AS-NOTED
DRAFTER	SD
JOB NO.	770
CHK'D BY	
SHT	A2.2 OF 24

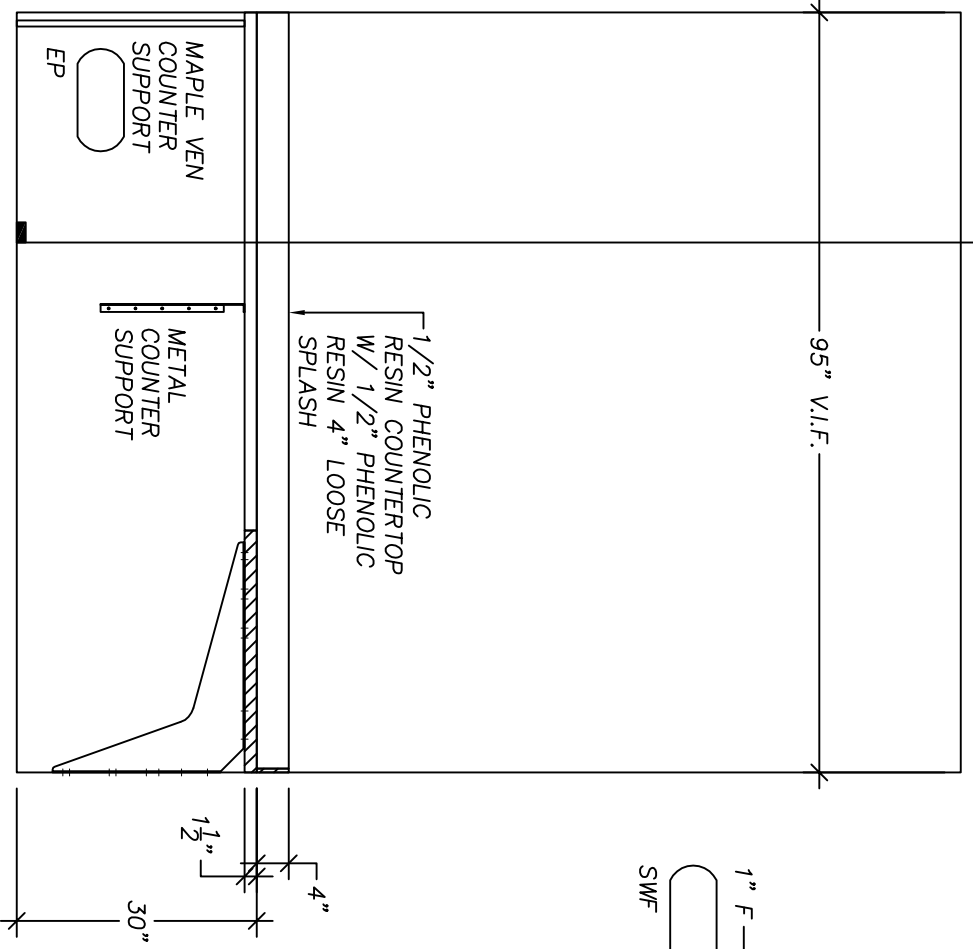
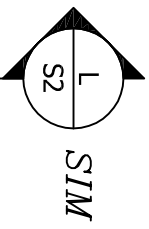
REVISIONS	
-----------	--



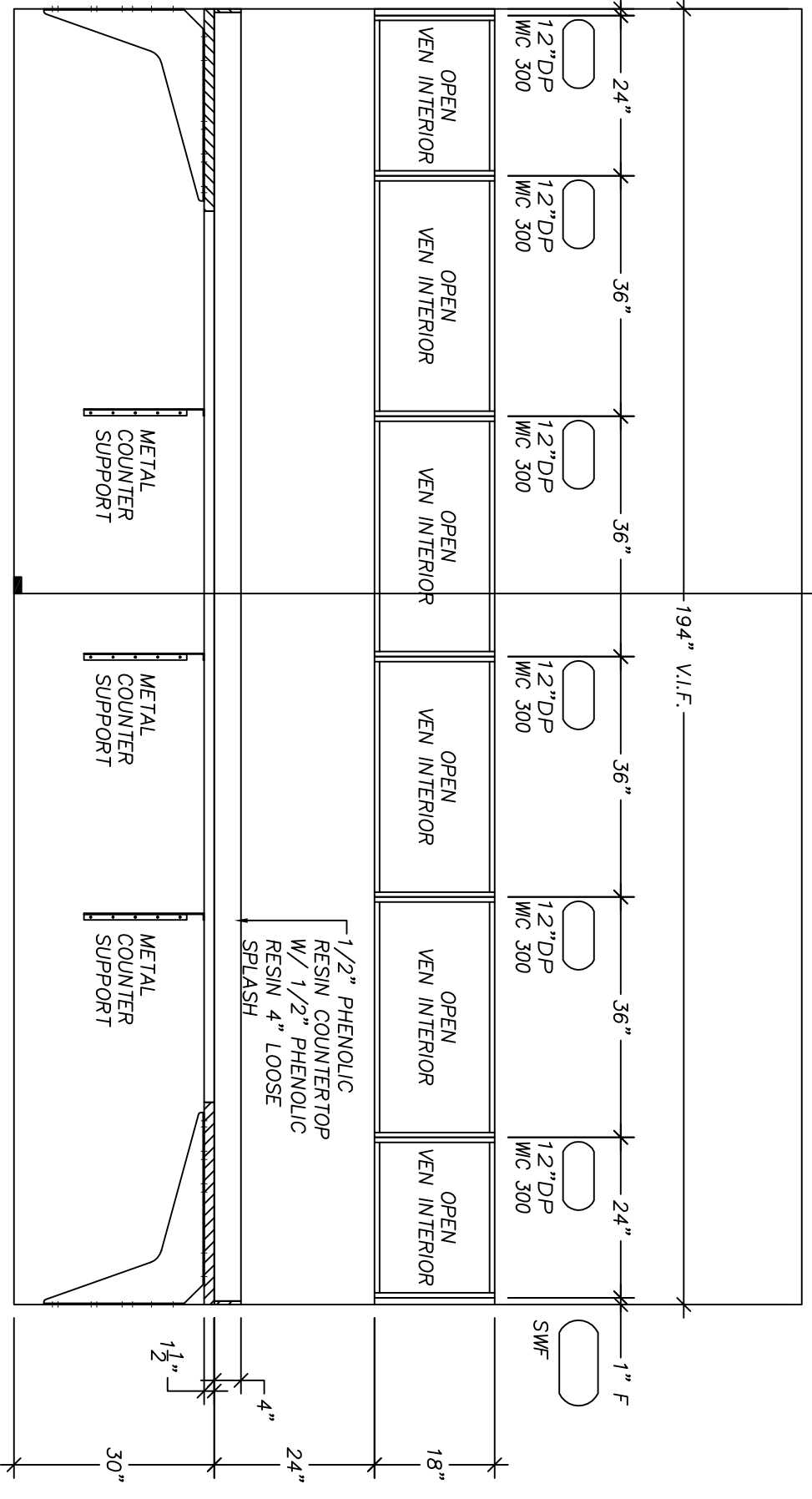
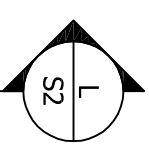
TITLE **ENLARGED PLAN & ELEVATIONS**
 PROJECT **WPCP REHABILITATION**
 3000 DAVIS STREET
 SAN LEANDRO, CALIF

NO.	REVISIONS

DATE **09/22/2011**
 SCALE **AS-NOTED**
 DRAFTER **SD**
 JOB NO. **770** CHK'D BY
 SHIT **A3.1** OF **24**



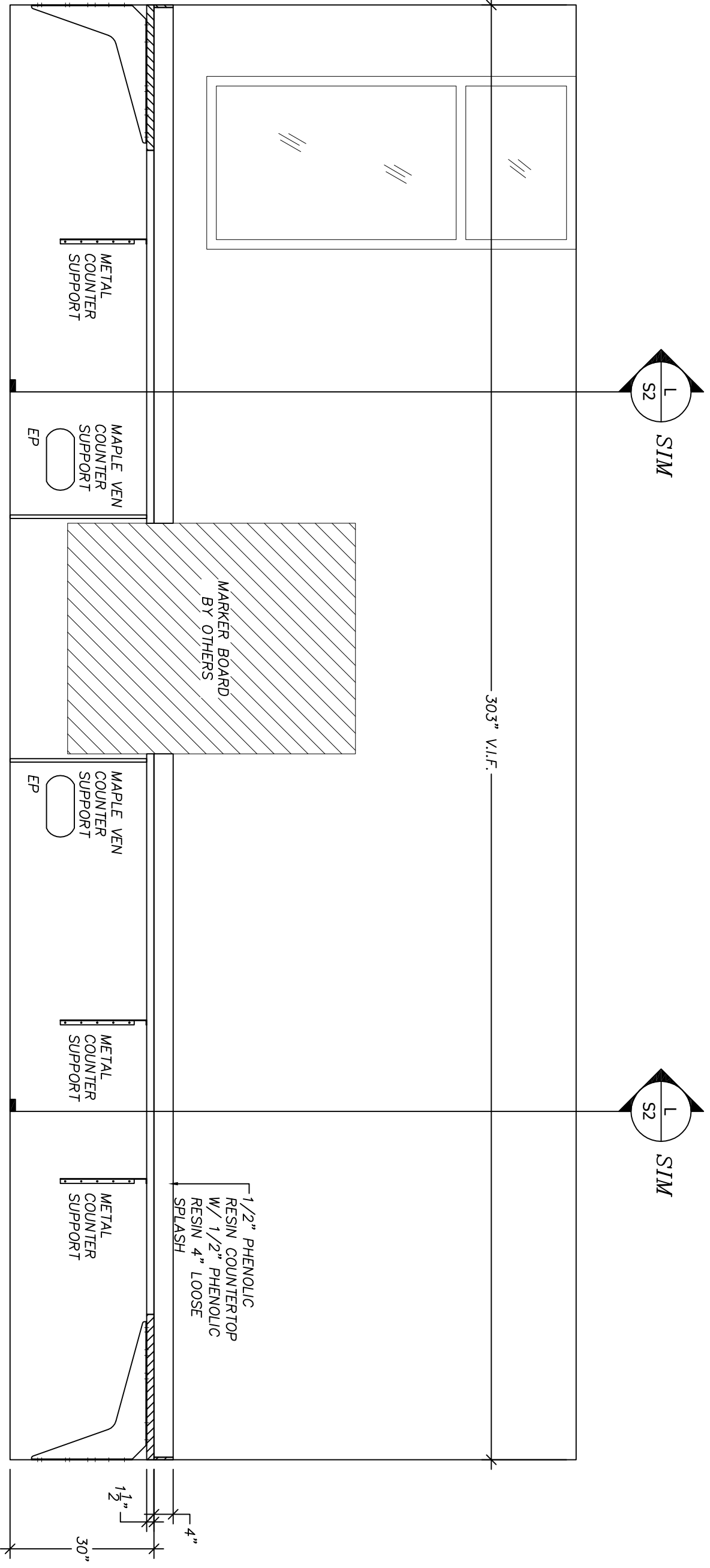
A
CONTROL ROOM 90.19
 Scale: 1/2" : 1'-0"



B
CONTROL ROOM 90.19
 Scale: 1/2" : 1'-0"

TITLE	ENLARGED PLAN & ELEVATIONS
PROJECT	WPCP REHABILITATION 3000 DAVIS STREET SAN LEANDRO, CALIF

DATE	09/22/2011
SCALE	AS-NOTED
DRAFTER	SD
JOB NO.	770
CHK'D BY	
SHT	A3.2 OF 24

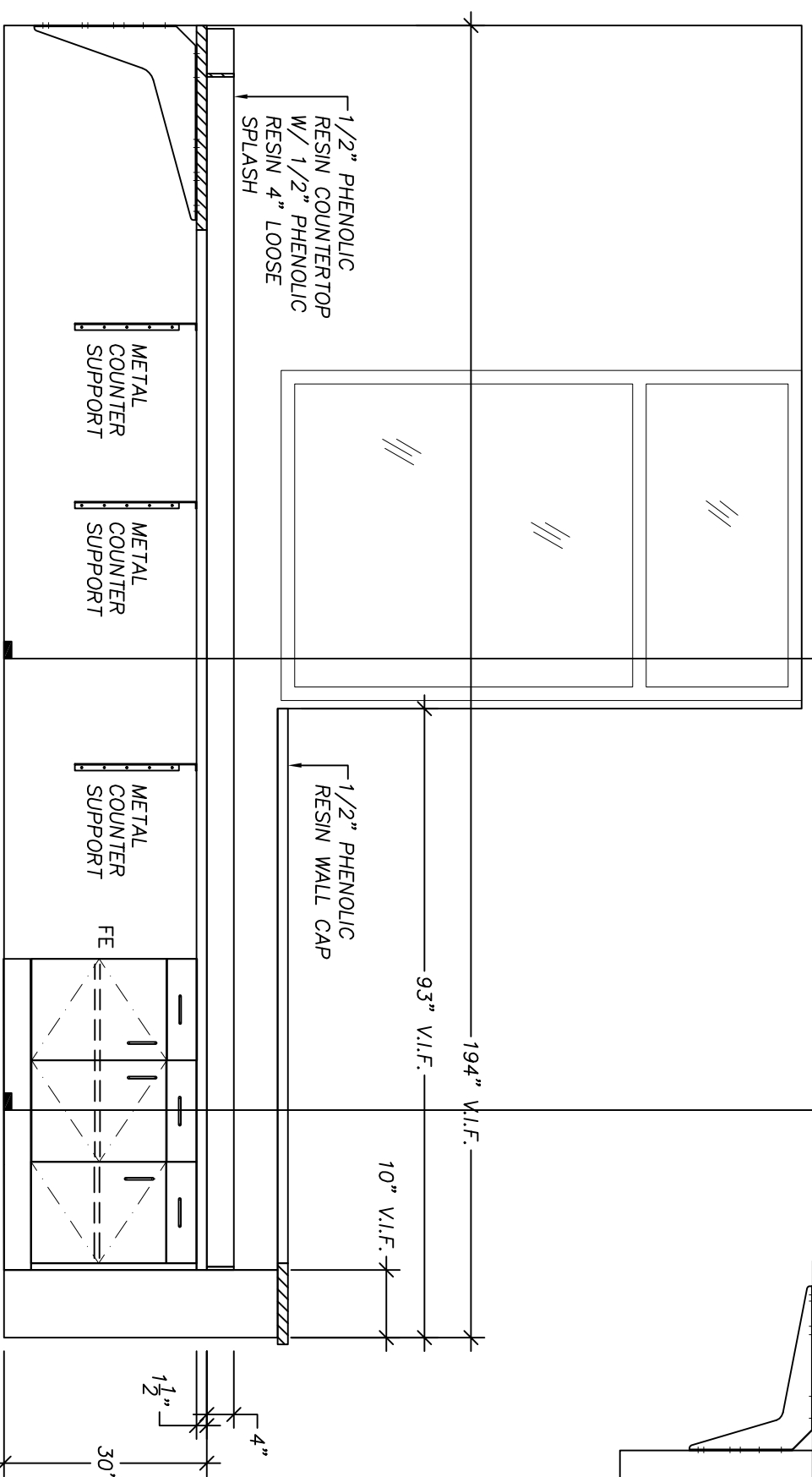
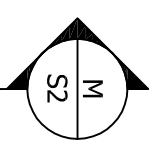
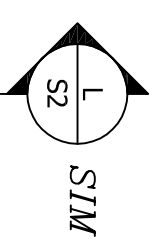


C CONTROL ROOM 90.19
 Scale: 1/2" = 1'-0"

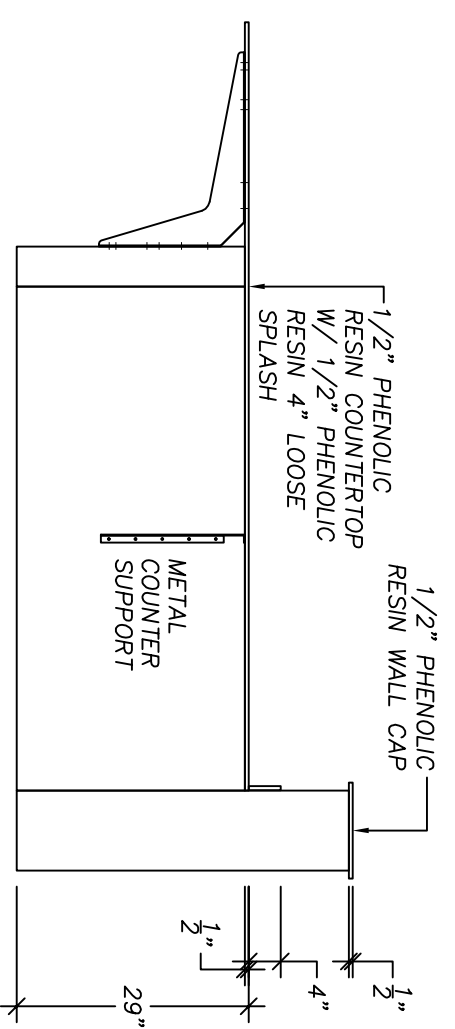
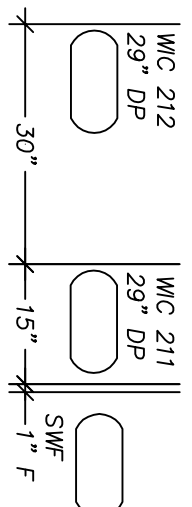
TITLE	ENLARGED PLAN & ELEVATIONS
PROJECT	WPCP REHABILITATION 3000 DAVIS STREET SAN LEANDRO, CALIF

REVISIONS	
-----------	--

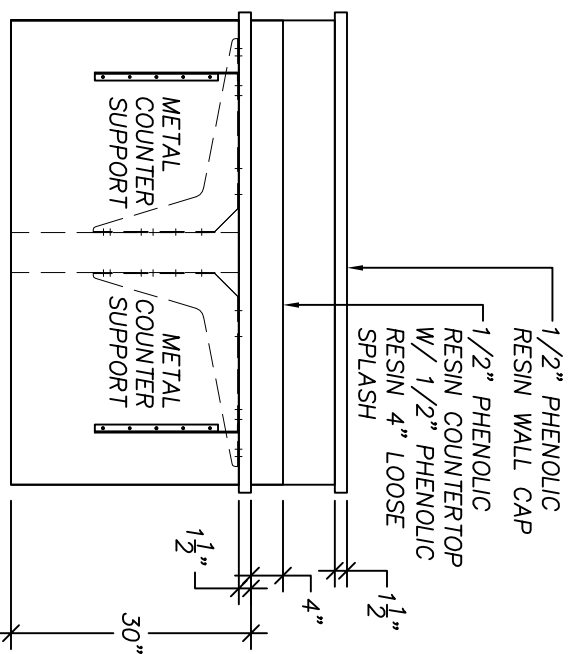
DATE	09/22/2011
SCALE	AS-NOTED
DRAFTER	SD
JOB NO.	770
CHK'D BY	
SHT	A3.3 OF 24



D CONTROL ROOM 90.19
Scale: 1/2" : 1'-0"



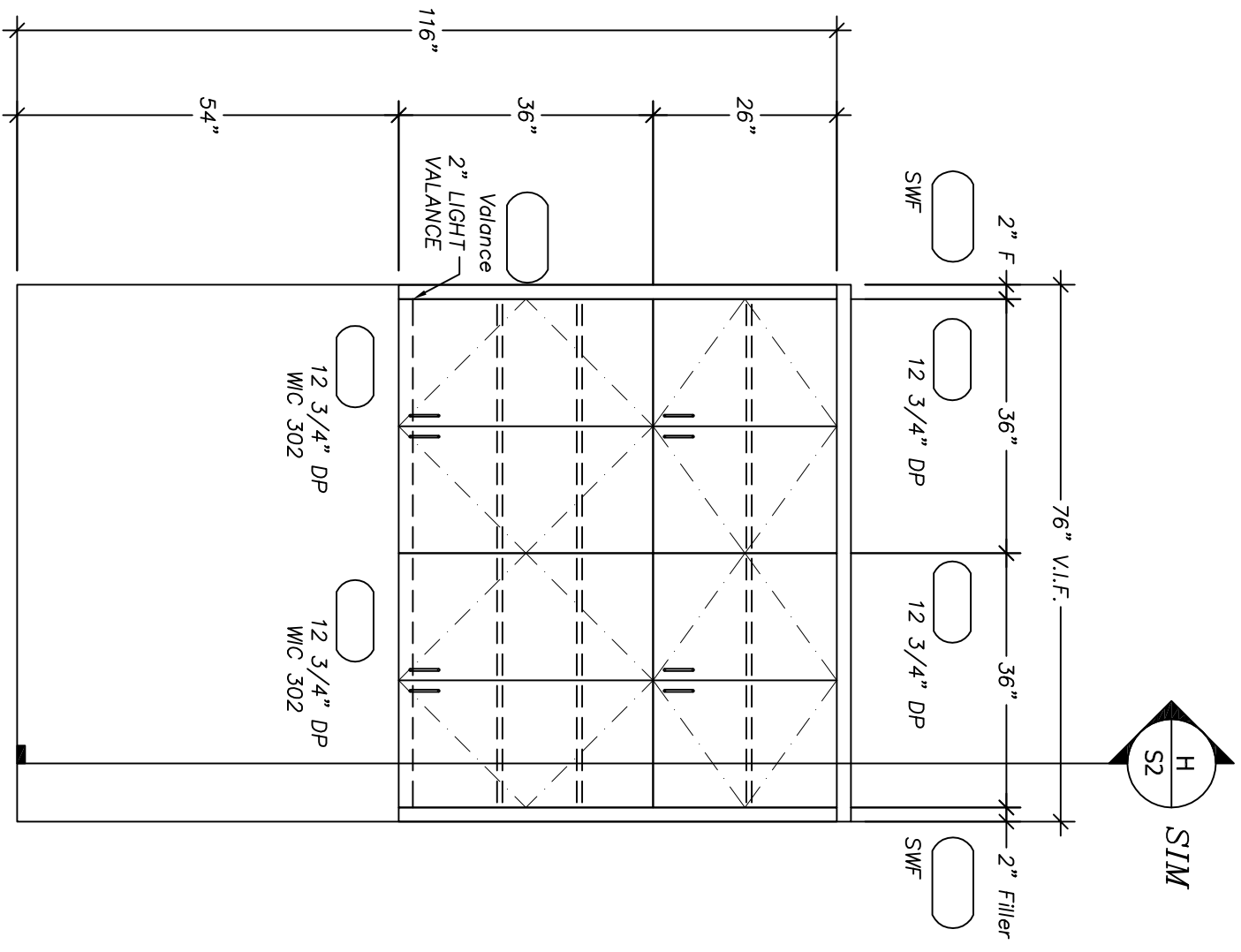
E CONTROL ROOM 90.19
Scale: 1/2" : 1'-0"



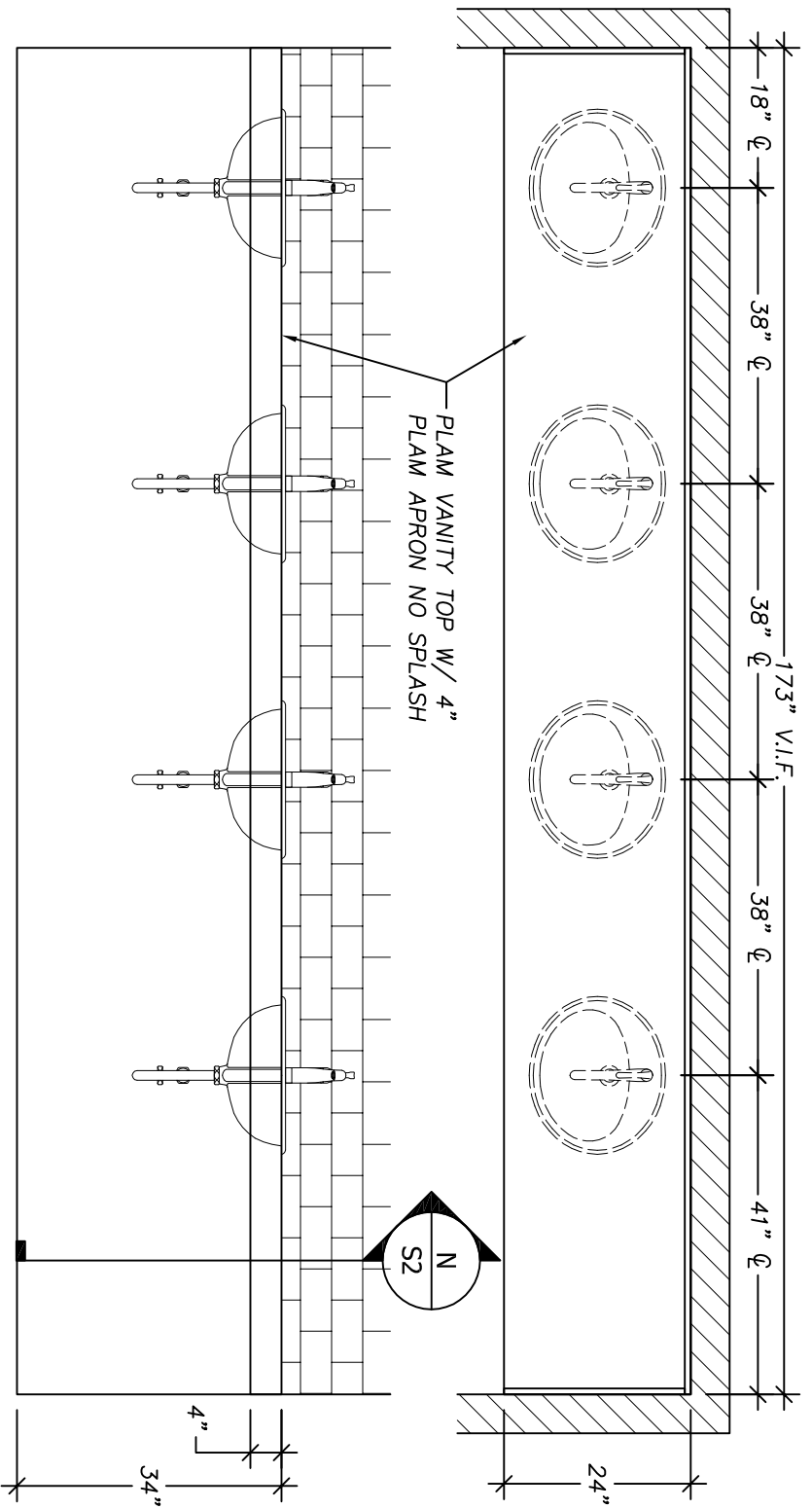
F CONTROL ROOM 90.19
Scale: 1/2" : 1'-0"

TITLE	ENLARGED PLAN & ELEVATIONS
PROJECT	WPCP REHABILITATION 3000 DAVIS STREET SAN LEANDRO, CALIF

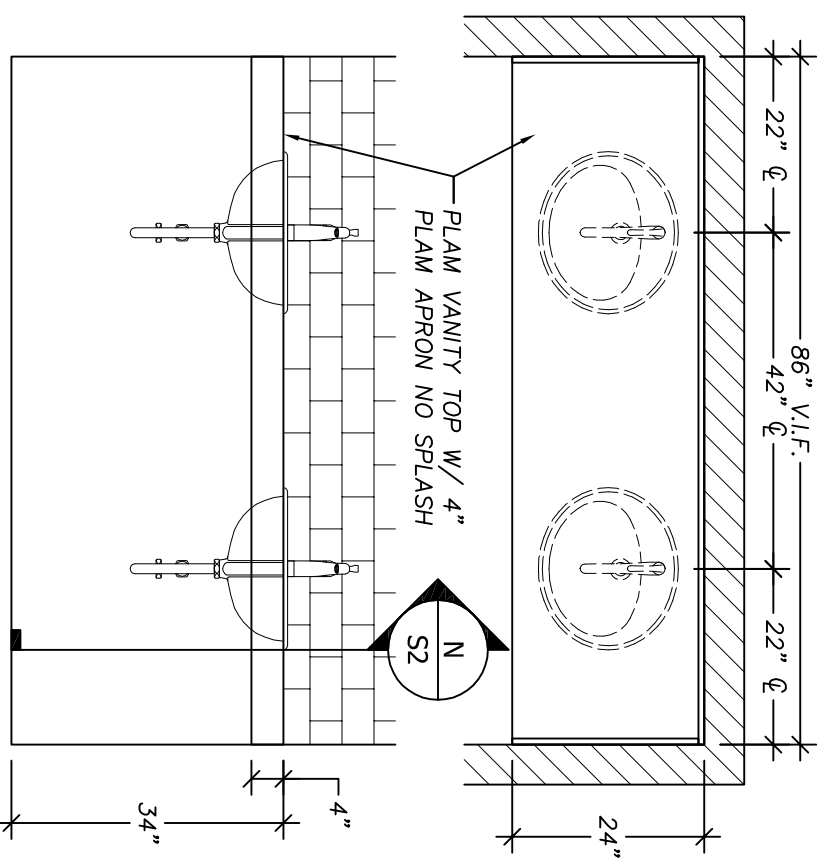
DATE	09/22/2011
SCALE	AS-NOTED
DRAFTER	SD
JOB NO.	770
CHK'D BY	
SHT	A3.4 OF 24



4A
LAUNDRY 90.13
Scale: 1/2" : 1'-0"



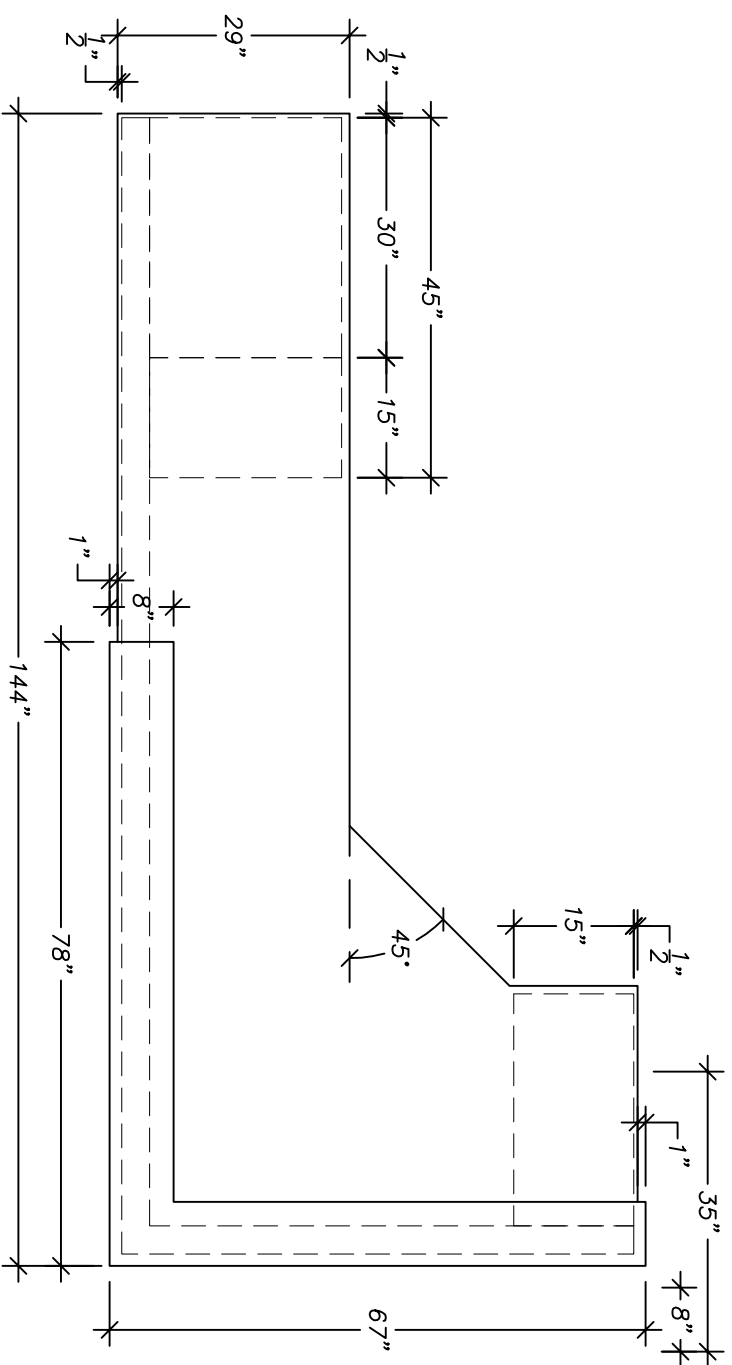
4B
MEN'S REST ROOM 90.12
Scale: 1/2" : 1'-0"



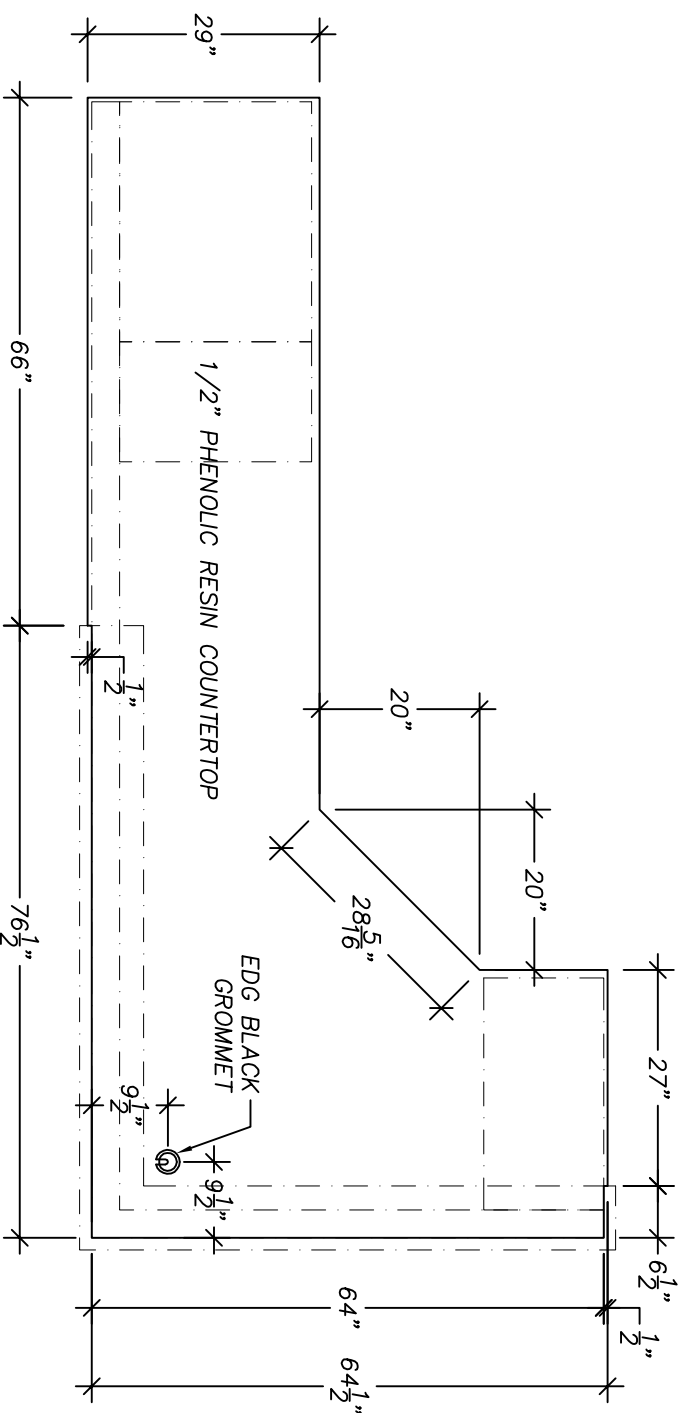
4C
WOMEN'S REST ROOM 90.07
Scale: 1/2" : 1'-0"

TITLE	ENLARGED PLAN & ELEVATIONS
PROJECT	WPCP REHABILITATION 3000 DAVIS STREET SAN LEANDRO, CALIF

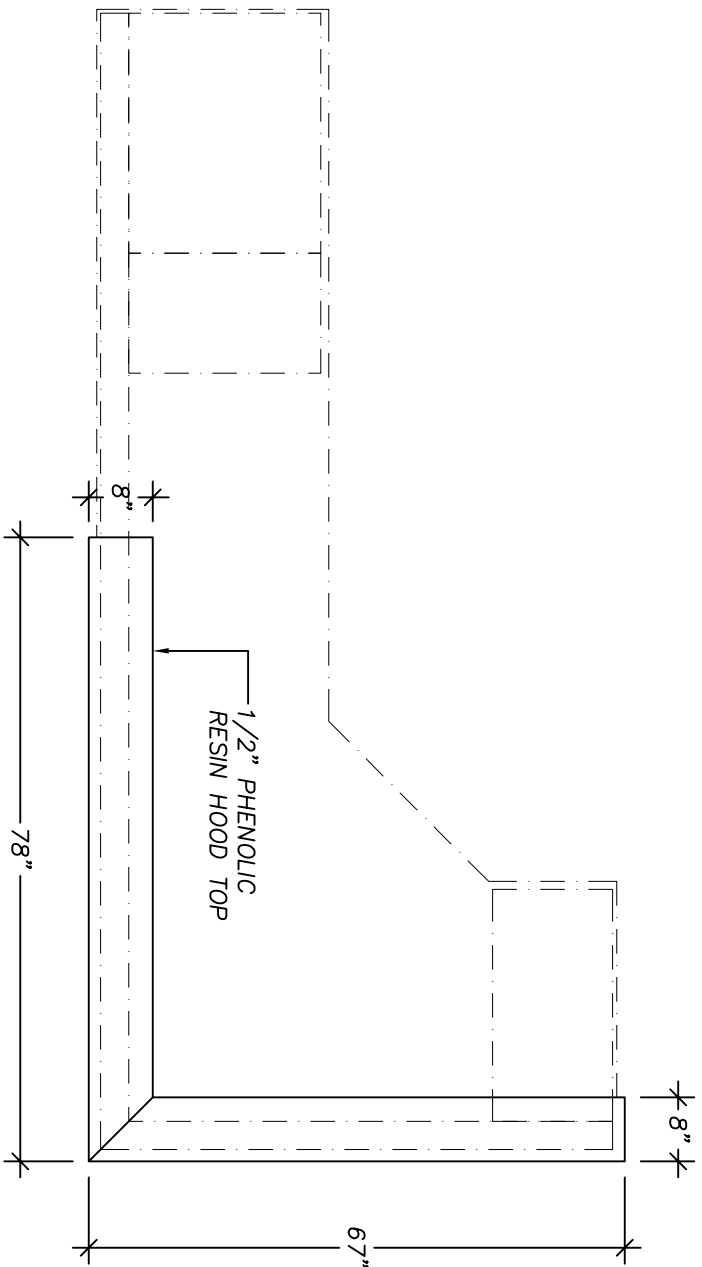
DATE	09/22/2011
SCALE	AS-NOTED
DRAFTER	SD
JOB NO.	770
CHK'D BY	
SHT	A4.1 OF 24



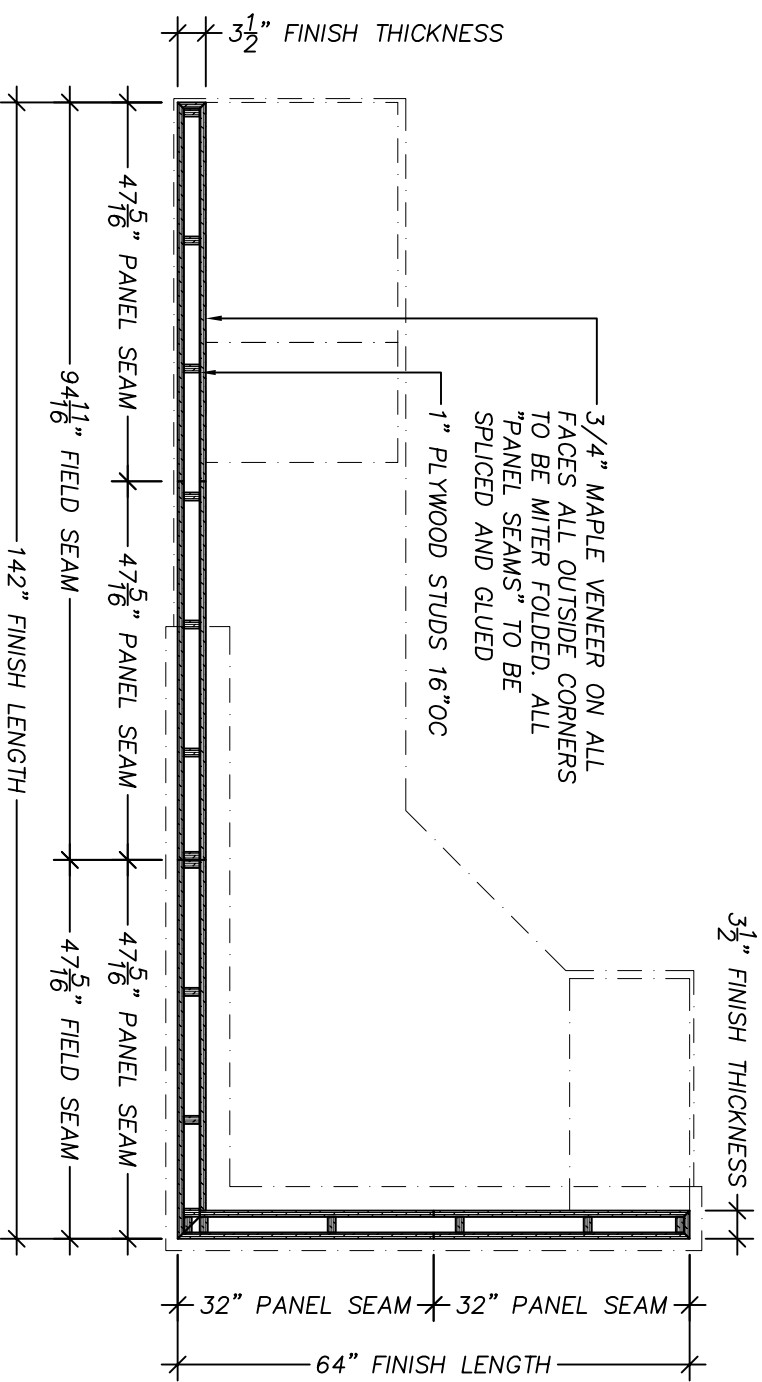
5A ADMIN DESK 90.21 (PLAN VIEW)
Scale: 1/2" : 1'-0"



5C ADMIN DESK 90.21 (WORK TOP PLAN VIEW)
Scale: 1/2" : 1'-0"



5B ADMIN DESK 90.21 (HOOD TOP PLAN VIEW)
Scale: 1/2" : 1'-0"



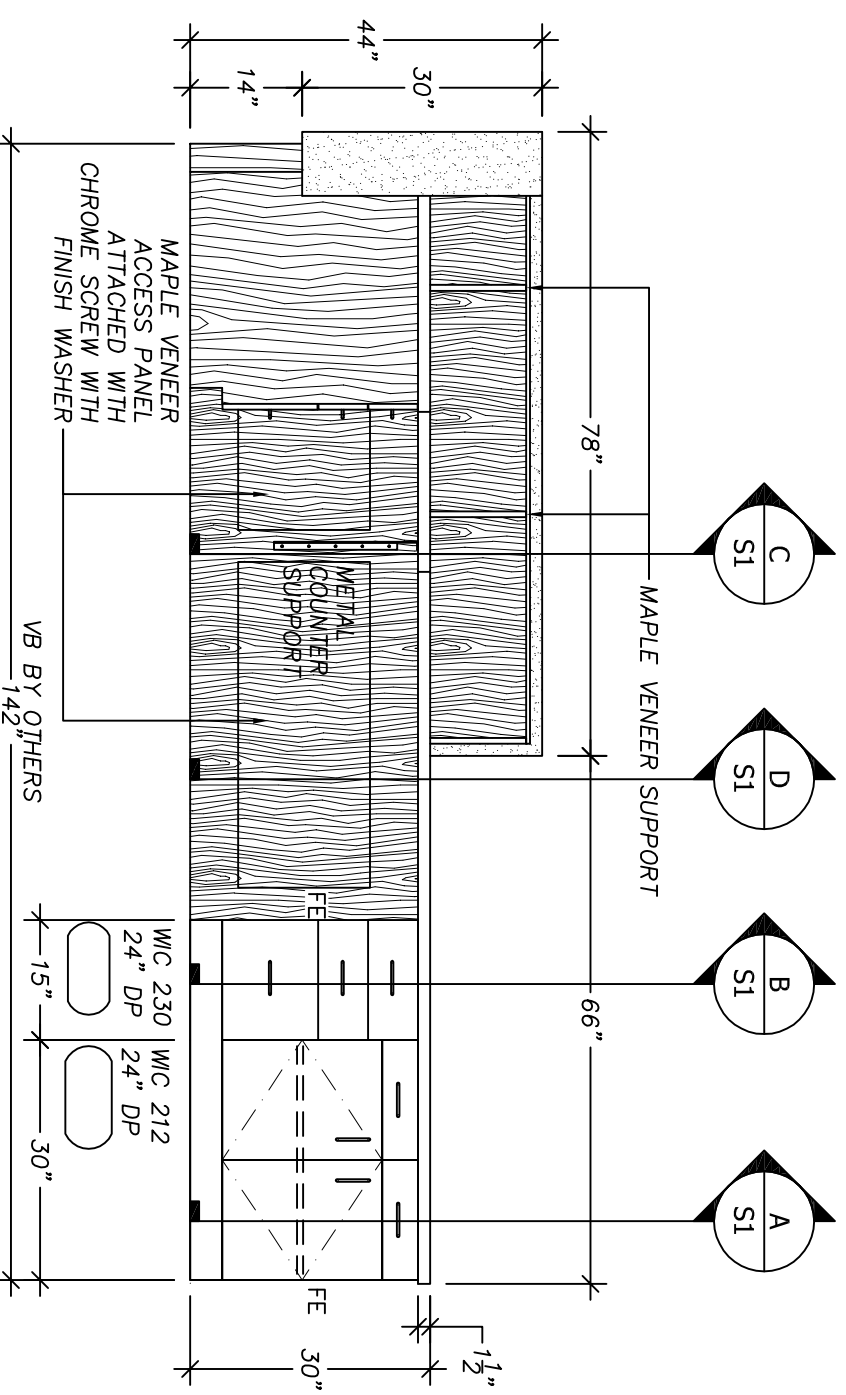
5D ADMIN DESK 90.21 (DIEWALL PLAN VIEW)
Scale: 1/2" : 1'-0"

LOCATION TO BE COORDINATED WITH GC AT TIME OF INSTALL

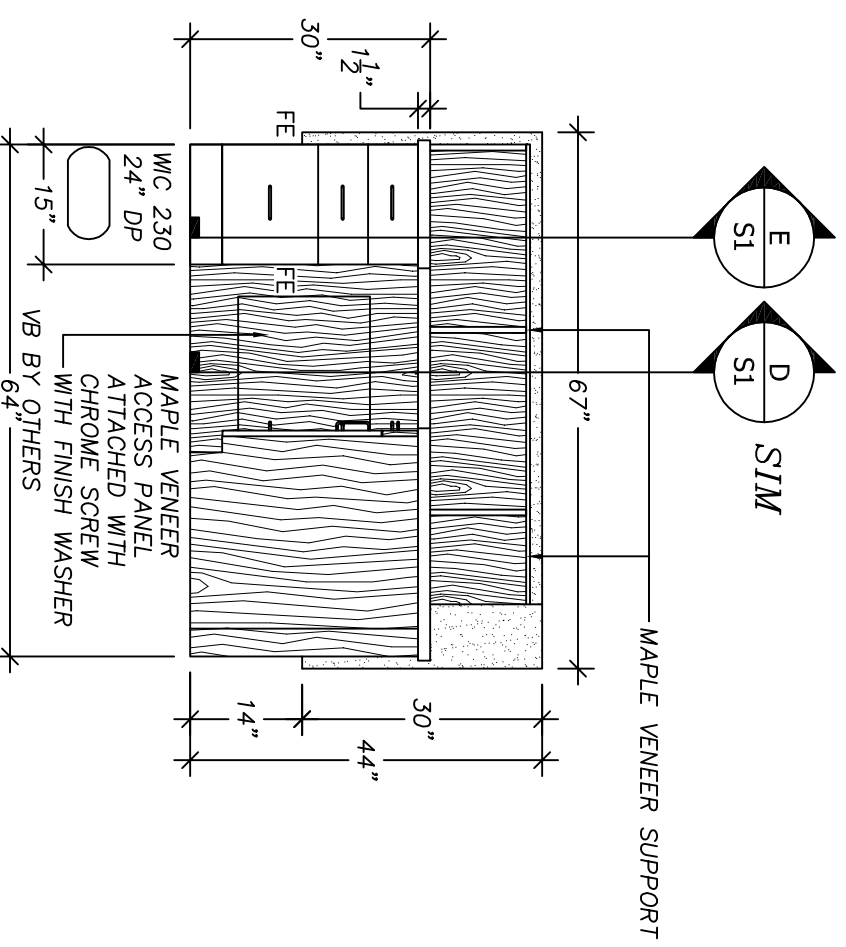
TITLE	ENLARGED PLAN & ELEVATIONS
PROJECT	WPCP REHABILITATION 3000 DAVIS STREET SAN LEANDRO, CALIF

REVISIONS

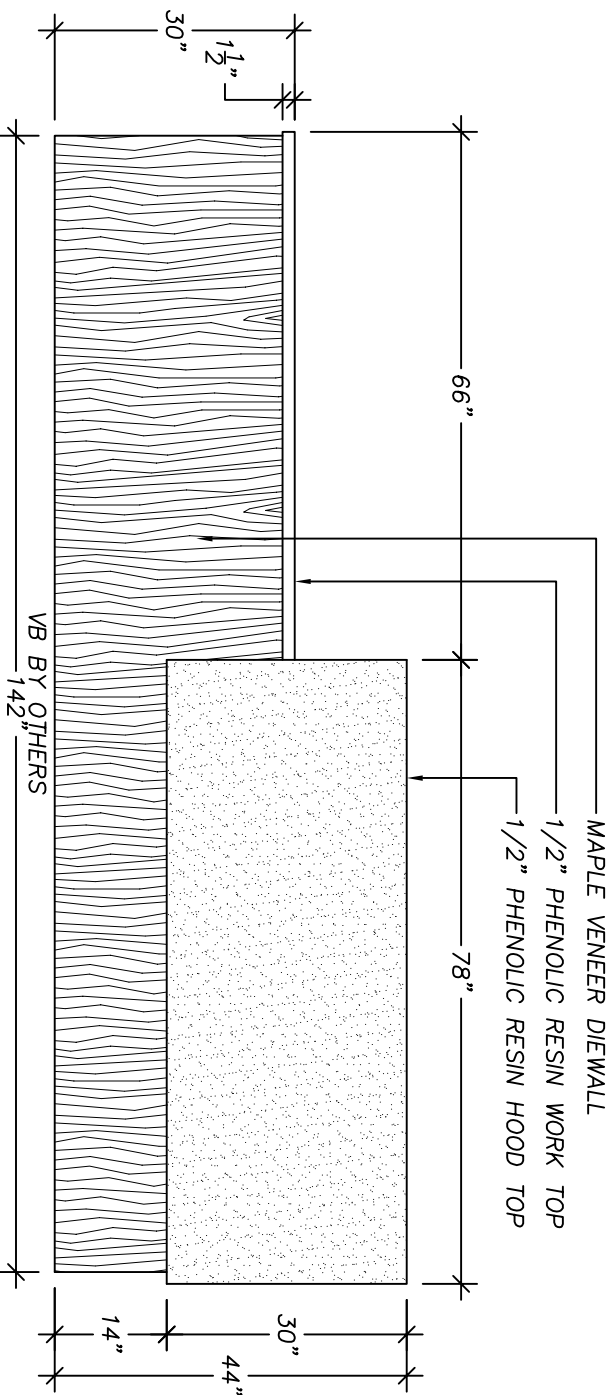
DATE	09/22/2011
SCALE	AS-NOTED
DRAFTER	SD
JOB NO.	770
CHK'D BY	
SH#	AS.1 OF 24



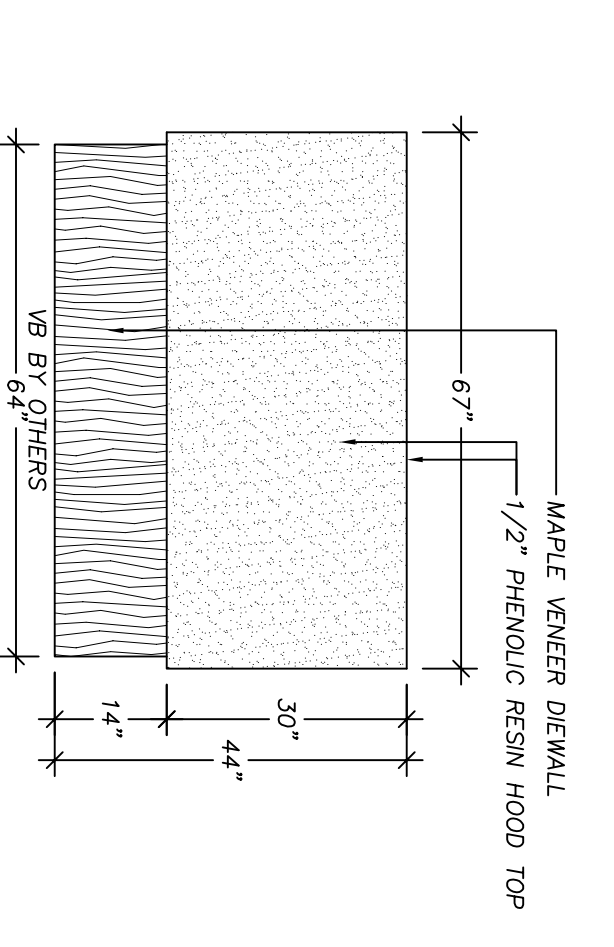
A ADMIN DESK 90.21 (ELEV VIEW)
Scale: 1/2" : 1'-0"



B ADMIN DESK 90.21 (ELEV VIEW)
Scale: 1/2" : 1'-0"



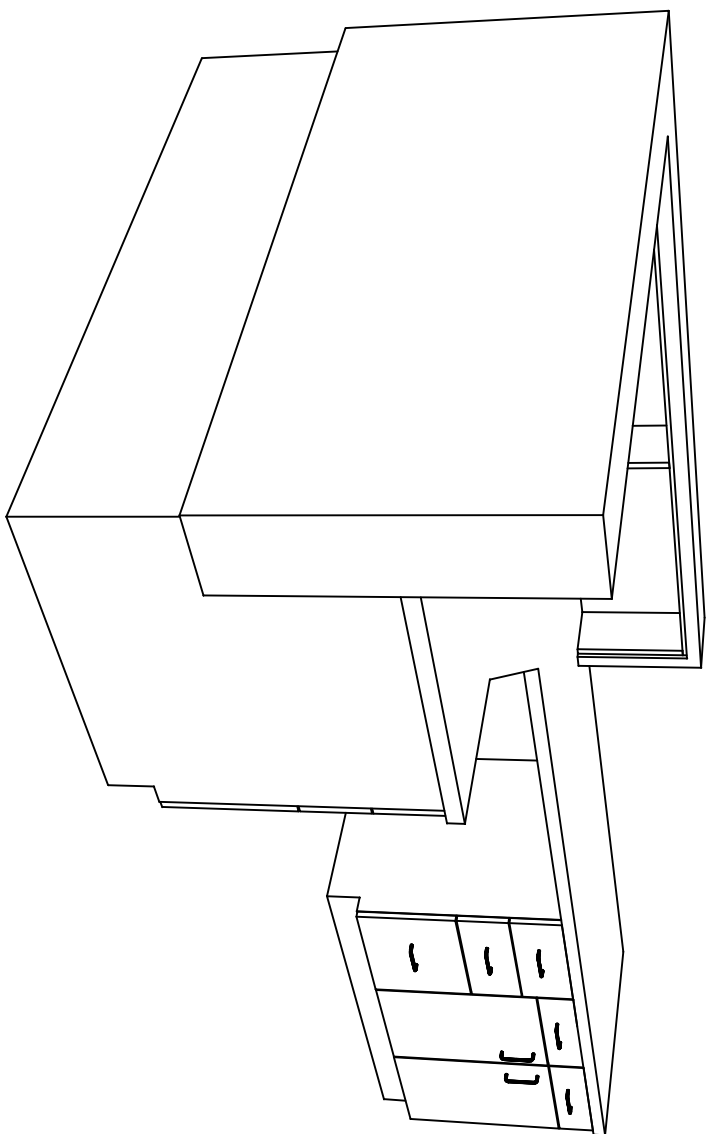
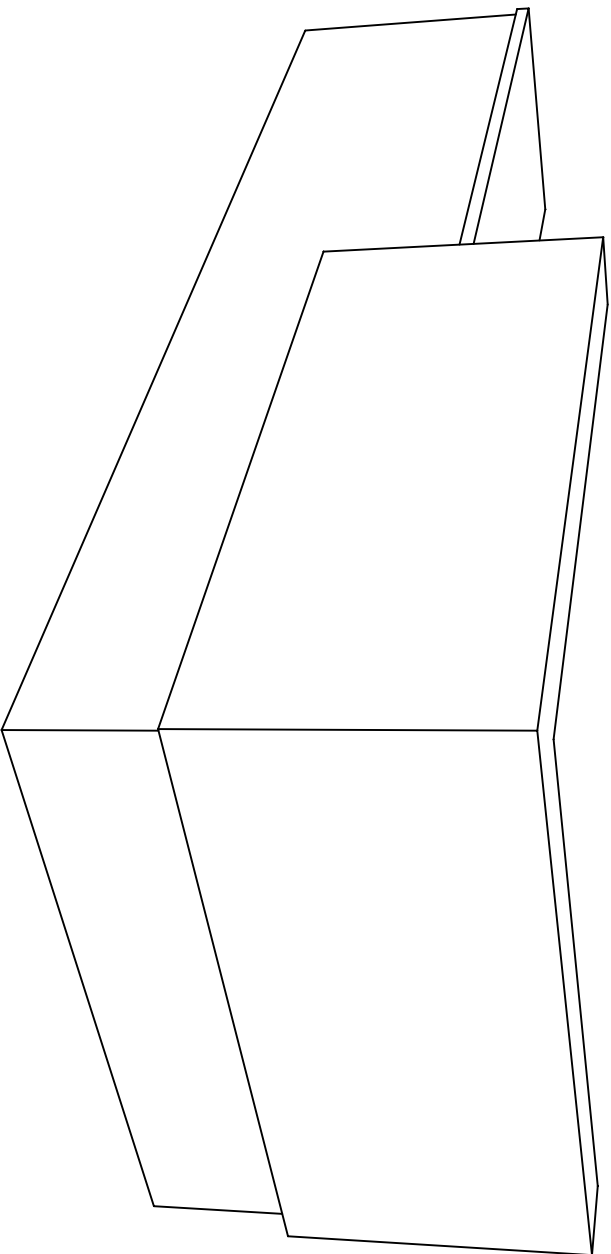
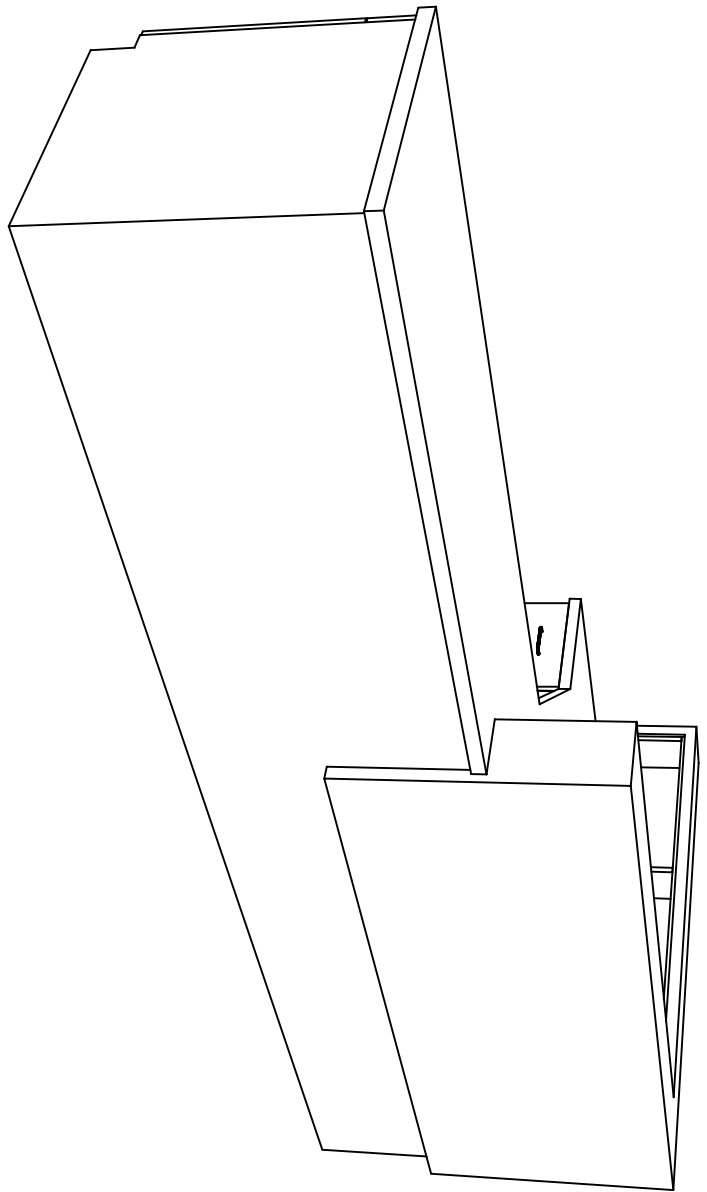
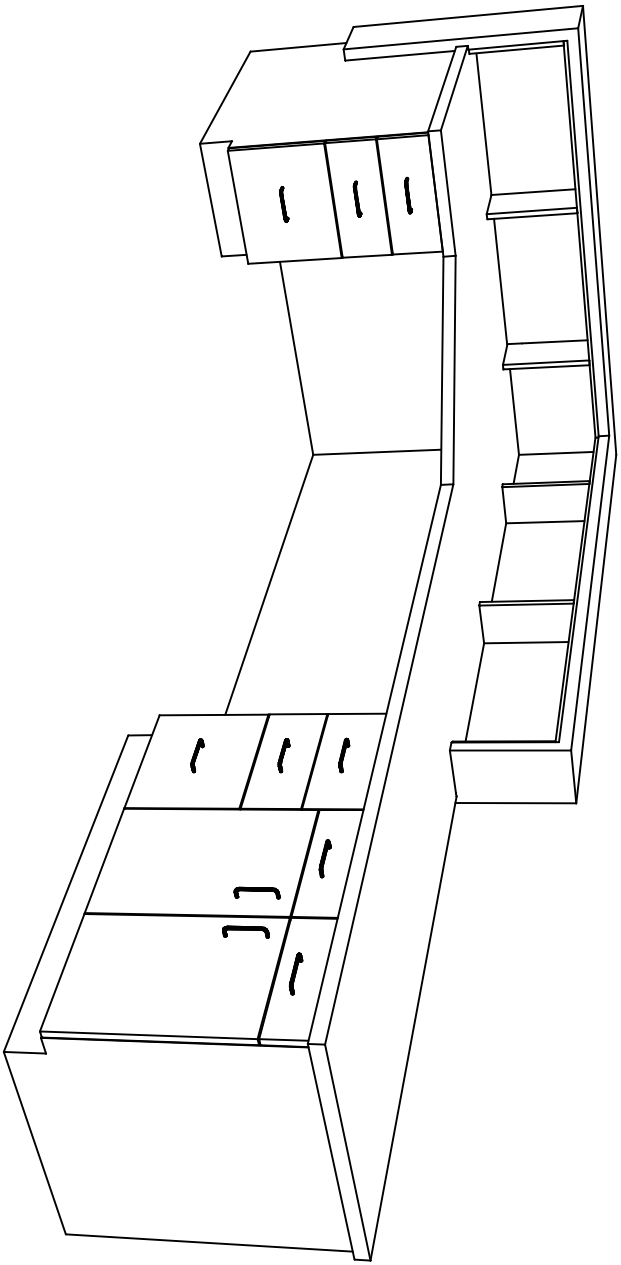
C ADMIN DESK 90.21 (ELEV VIEW)
Scale: 1/2" : 1'-0"



D ADMIN DESK 90.21 (ELEV VIEW)
Scale: 1/2" : 1'-0"

TITLE	ENLARGED PLAN & ELEVATIONS
PROJECT	WPCP REHABILITATION 3000 DAVIS STREET SAN LEANDRO, CALIF

DATE	09/22/2011
SCALE	AS-NOTED
DRAFTER	SD
JOB NO.	770
CHK'D BY	
SHT	A5.2 OF 24



TITLE	3D ISO
PROJECT	WPCP REHABILITATION 3000 DAVIS STREET SAN LEANDRO, CALIF

REVISIONS

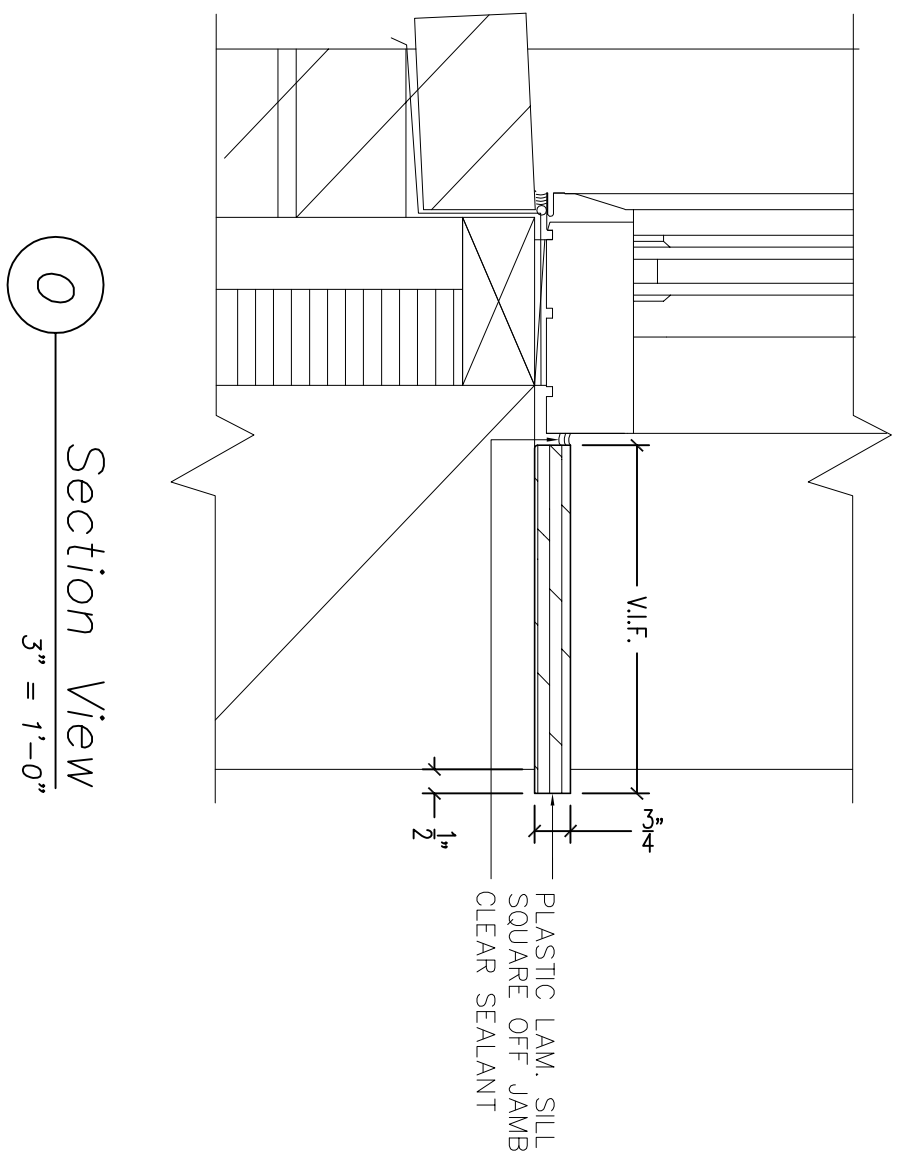
DATE
09/22/2011

SCALE
AS-NOTED

DRAFTER
SD

JOB NO. | CHK'D BY
770 |

SHT
A5.3 OF 24



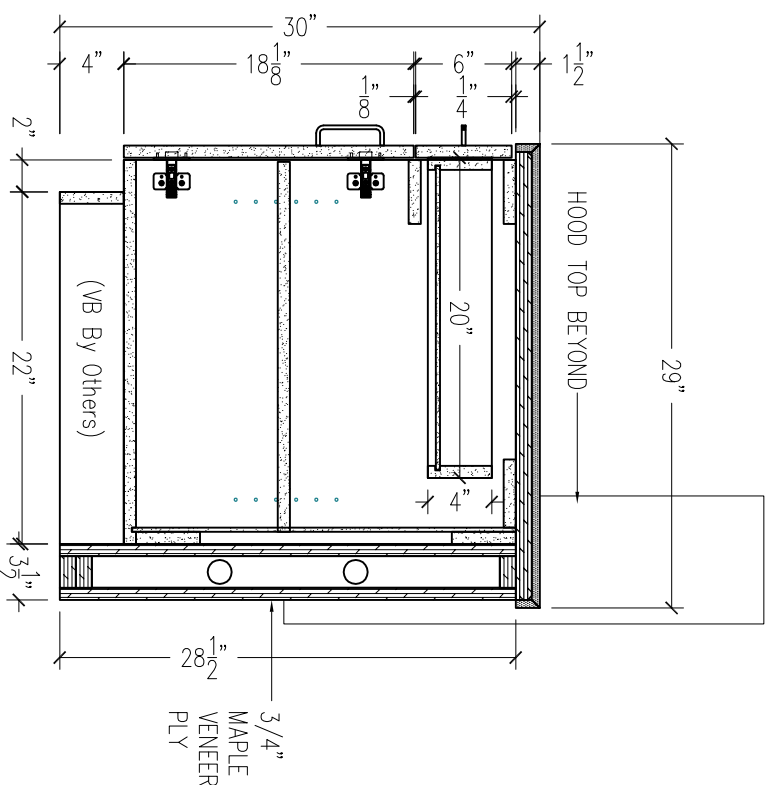
Section View
3" = 1'-0"

WINDOW SILL FIELD DIMISION		
ROOM NUMBER	DEPTH	LENGTH
1	90.08	
2	90.03	
3	90.28	
4	90.28	
5	90.28	
6	90.32	
7	90.02	
8	90.02	
9	90.20	
10	90.04	
11	90.05	
12	90.06	
13	90.07	
14	90.10	
15	90.10	
16	90.19	
17	90.19	
18	90.20	
19	90.21	
20	90.22	
21	90.22	
22	90.23	
23	90.23	
24	90.28	
25	90.28	
26	90.29	

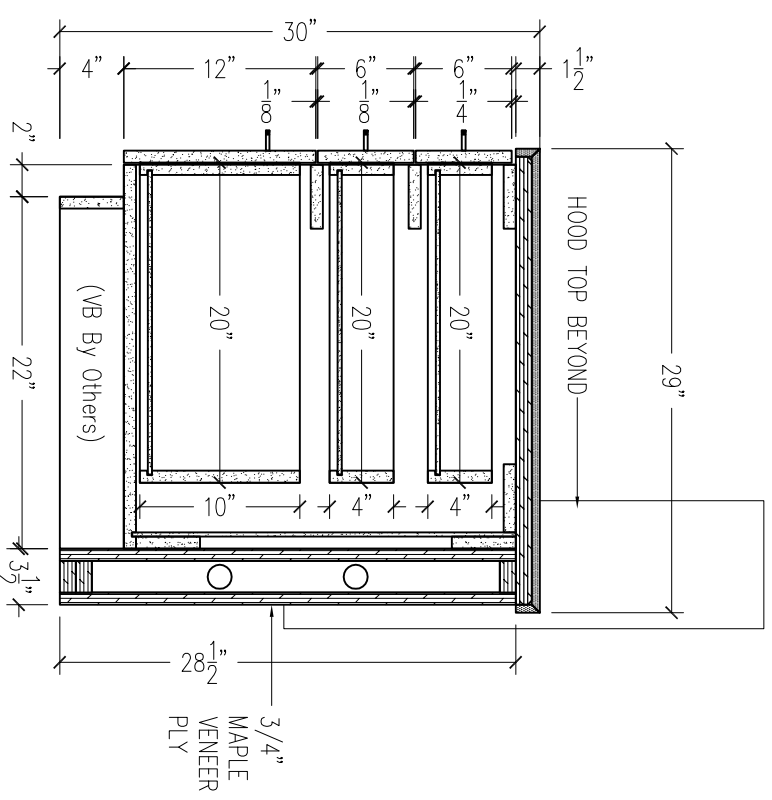
TITLE	WINDOW SILLS
PROJECT	WPCP REHABILITATION 3000 DAVIS STREET SAN LEANDRO, CALIF

REVISIONS	
-----------	--

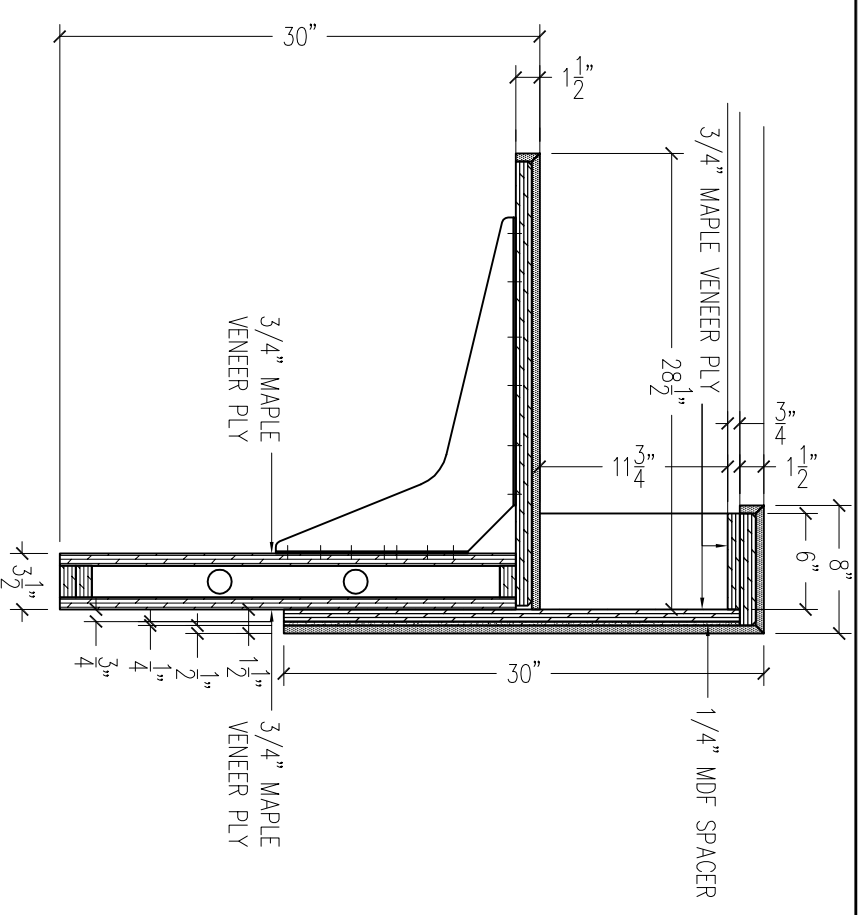
DATE	09/22/2011
SCALE	AS-NOTED
DRAFTER	SD
JOB NO.	770
CHK'D BY	
SHT	A6.1 OF 24



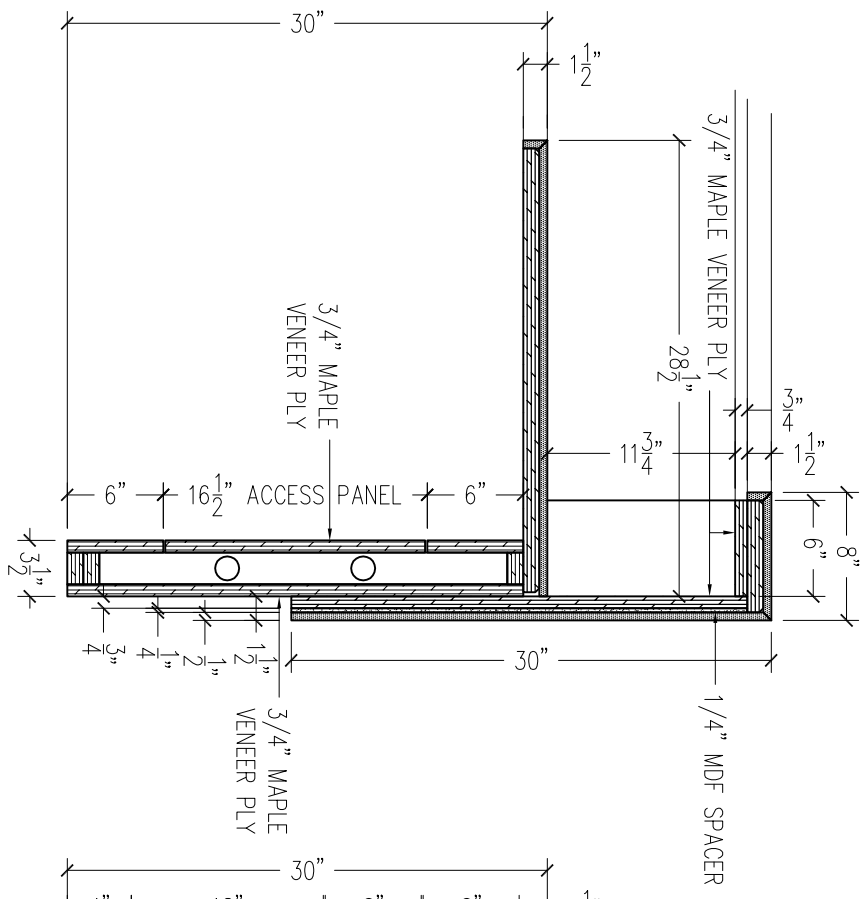
A Section View
1" = 1'-0"



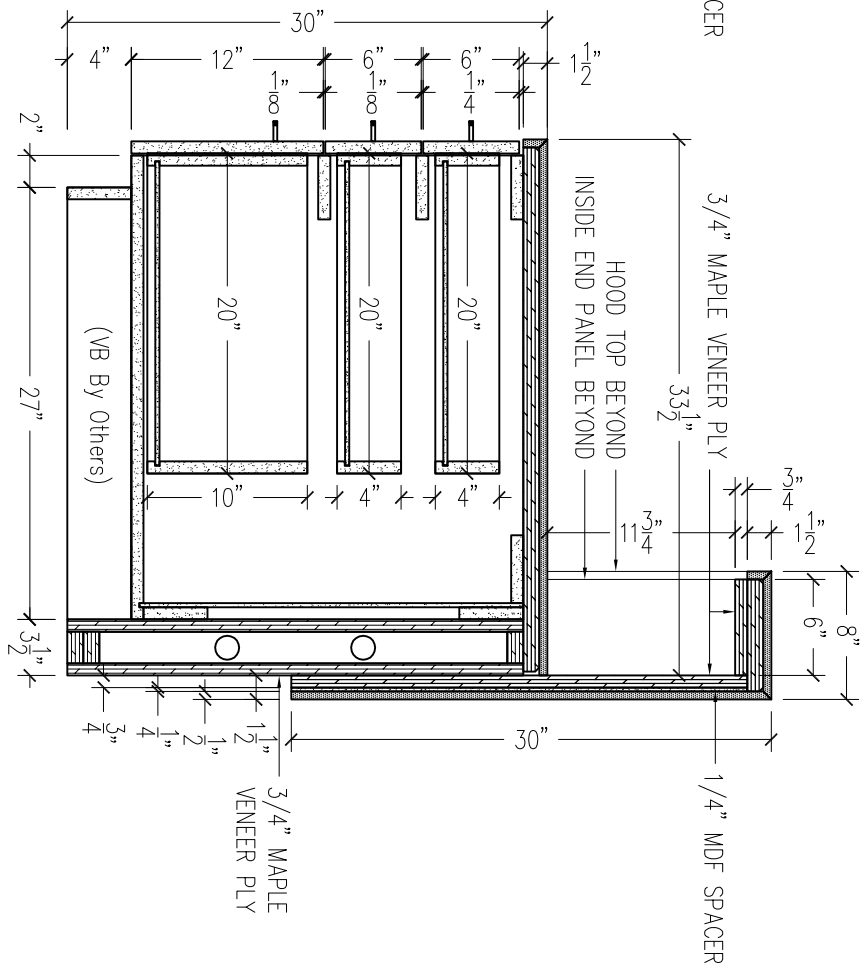
B Section View
1" = 1'-0"



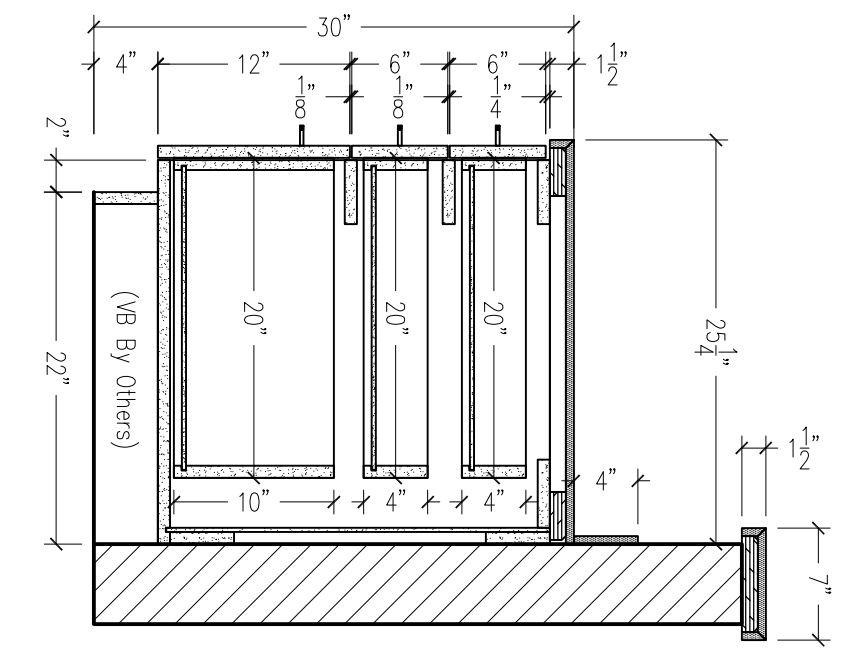
C Section View
1" = 1'-0"



D Section View
1" = 1'-0"



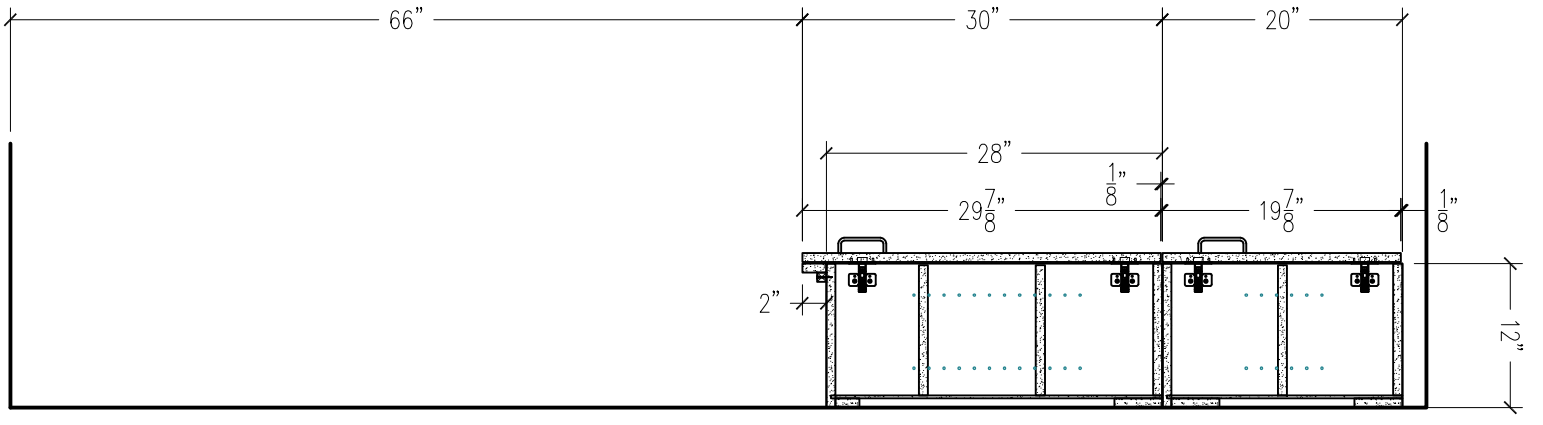
E Section View
1" = 1'-0"



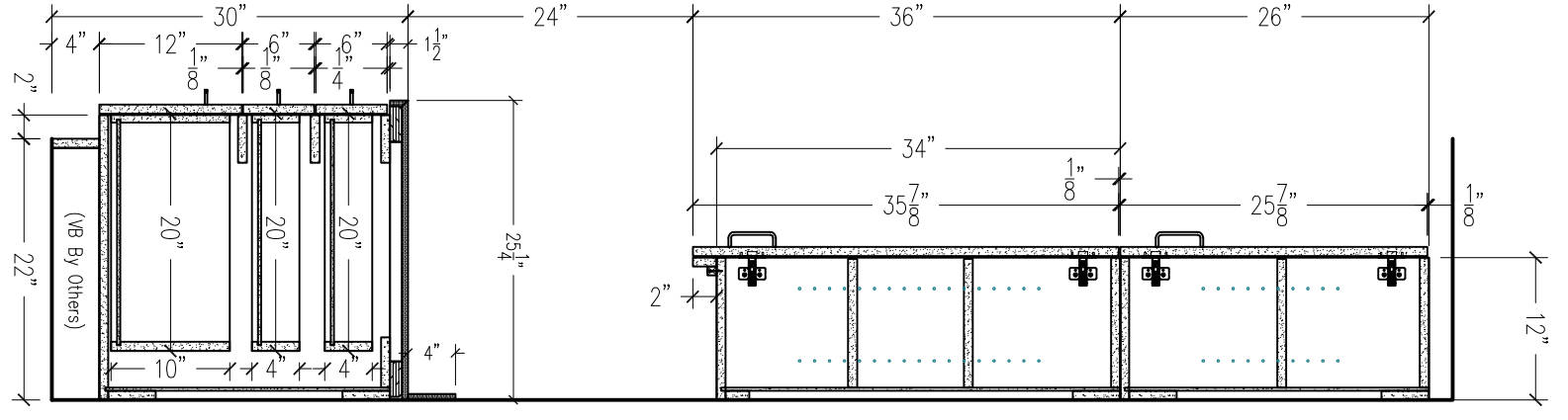
F Section View
1" = 1'-0"

TITLE	SECTIONS	
PROJECT	WPCP REHABILITATION 3000 DAVIS STREET SAN LEANDRO, CALIF	

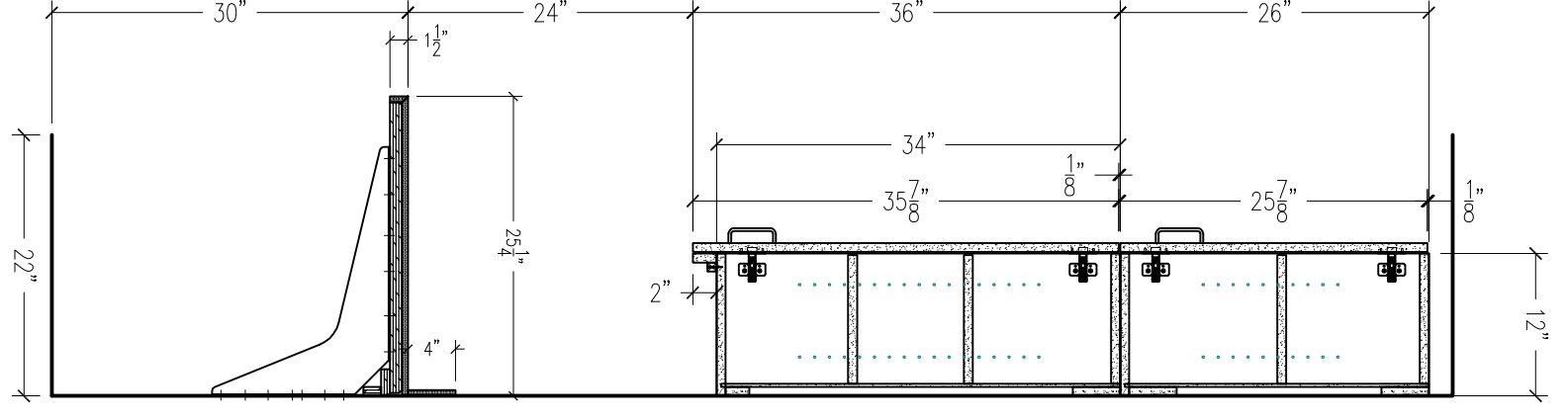
DATE	09/22/2011
SCALE	AS-NOTED
DRAFTER	SD
JOB NO.	770
CHK'D BY	
SHT	S1 OF 24



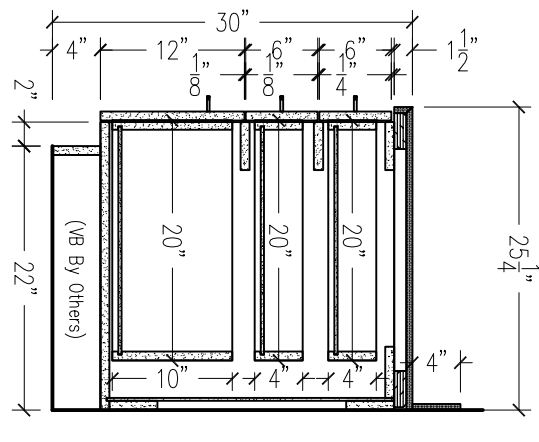
G Section View
3/4" = 1'-0"



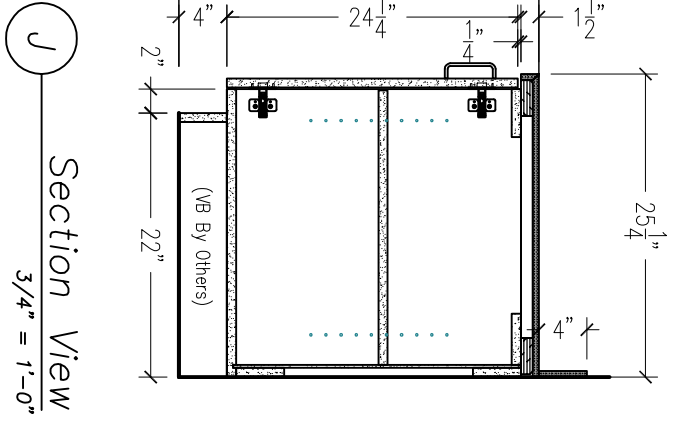
H Section View
3/4" = 1'-0"



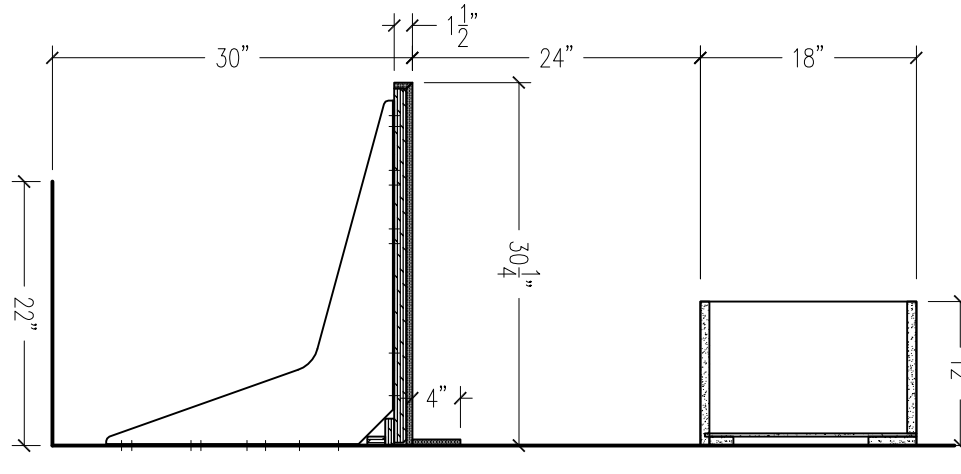
I Section View
3/4" = 1'-0"



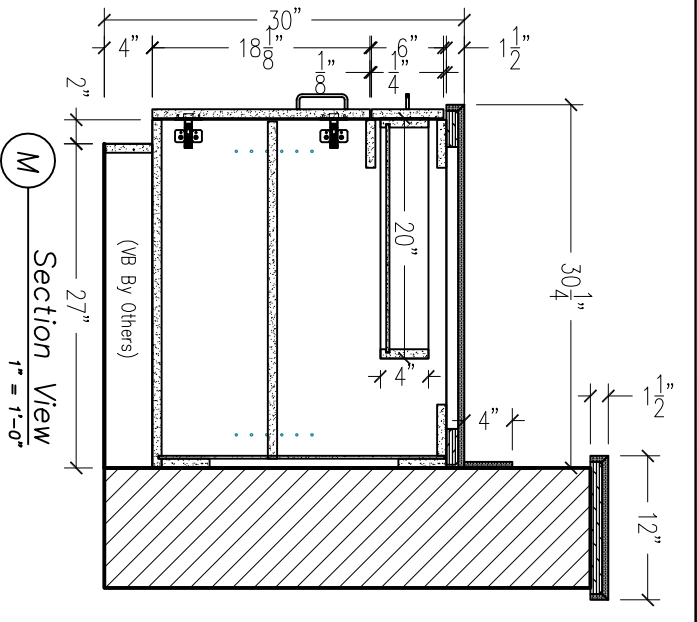
K Section View
3/4" = 1'-0"



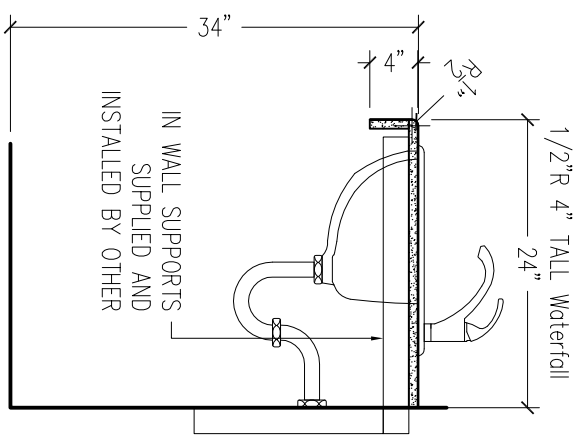
J Section View
3/4" = 1'-0"



L Section View
3/4" = 1'-0"



M Section View
1" = 1'-0"



N Section View
3/4" = 1'-0"

TITLE	SECTIONS
PROJECT	WPCP REHABILITATION 3000 DAVIS STREET SAN LEANDRO, CALIF

DATE	09/22/2011
SCALE	AS-NOTED
DRAFTER	SD
JOB NO.	770
CHK'D BY	
SHT	S2 OF 24

REVISIONS	
-----------	--